

**Lithuania**

FRANET National Focal Point

Social Thematic Study

The situation of Roma

2012

Lithuanian Social Research Centre, Institute for Ethnic Studies

**DISCLAIMER:** This study was prepared under contract by the FRA's multidisciplinary research network FRANET. It is made available for information purposes only and does not necessarily reflect the views or the official position of the FRA.

## Table of Contents

<b>EXECUTIVE SUMMARY .....</b>	<b>3</b>
<b>1 ROMA POPULATION .....</b>	<b>8</b>
<b>2 EDUCATION.....</b>	<b>10</b>
<b>3 EMPLOYMENT.....</b>	<b>16</b>
<b>4 HOUSING AND NEIGHBOURHOOD.....</b>	<b>20</b>
<b>5 HEALTH .....</b>	<b>28</b>
<b>6 POVERTY/ECONOMIC SITUATION .....</b>	<b>31</b>
<b>7 ACTIVE CITIZENSHIP/RIGHTS AWARENESS.....</b>	<b>35</b>
<b>ANNEXES .....</b>	<b>37</b>
<b>1. Bibliography .....</b>	<b>37</b>
<b>2. Statistical tables.....</b>	<b>41</b>
<b>3. Table of complaints.....</b>	<b>48</b>
<b>4. Table of sources (reports and studies on Roma) .....</b>	<b>49</b>
<b>5. Roma networks.....</b>	<b>55</b>

## **Executive summary**

The thematic study on the situation of Roma in Lithuania presents an overview of desk research and field research on the following thematic areas: education, employment, housing/neighbourhood, health, poverty/economic situation and active citizenship/ rights awareness.

The information provided is based on the following studies: *Attitudes of Roma and Employers about Roma Integration in the Labour Market (2007)*, *Roma Situation: Roma at the Cross-Roads of Education and the Labour Market (2008)*, and *Housing Conditions of Roma and Travellers (2009)*. A report, *Lithuanian Roma and Statistics (2005)*, analyses and presents quantitative data on the Roma community with reference to the 2001 Census.

### **Education**

There is no disaggregated statistical data on how many Roma children aged 4 to 7 years old attend pre-school. In the total population, 54.6% of all 1 to 6 years old children attended pre-school and pre-primary education groups in 2011. In a 2008 survey of Roma parents, it was indicated that 30.7% of Roma children attended pre-school establishments or pre-primary education groups.

Statistical data on Roma children show a tendency of steady numbers of Roma children attending secondary schools in Lithuania. Nevertheless, a number of Roma children remain outside the formal education system— according to the 2001 Census, the percentage of children aged 7–14 who did not attend school was 1.25% for the total population of Lithuania (5 243 children) and 15% for Roma children of this age group (65 children). No recent statistical data are available on children outside the formal education system during compulsory school age.

There is a positive trend regarding the timely school start of Roma children. The 2008 survey showed that 54% of adult Roma surveyed and 77% of their children started attending school at the age of 6–7 years old. According to the latest study results, a distinct part of young Roma (32% of those below 18 years old) started school at the age of 10 or later. This part is relatively large in comparison with older generations of Roma.

In 2008, on average, the Roma surveyed attended school for 6–7 years and finished five grades. More than half of the Roma surveyed (56%) did not acquire higher education than their parents. According to the 2001 Census, 25.3% of Roma did not finish primary school or were illiterate (the national average is 4.6%), 31% of Roma finished only primary school (the national average is 20.8%) and 43.2% attained a basic or higher education (national average 74.1%).

There is no data available on special schools for Roma children. Roma children usually attend mainstream schools, but are often assigned to special education programmes.

## **Employment**

On the 1<sup>st</sup> of July 2012, there were 158 unemployed Roma registered at the Vilnius local labour exchange office (0.3 per cent of all registered unemployed persons in Vilnius city). No statistical data is available on unemployment of Roma in other areas of Lithuania.

In 2008 the majority of the surveyed Roma identified themselves as unemployed (56.7%), while 40.7% of the respondents stated that they were currently employed or involved in activities that generate income. Only 8.7% of the surveyed Roma were employed under labour contracts, and 6.1% indicated working without a contract.

In 2007, the majority of the surveyed Roma did not have any profession (83.2%), while 16% stated that they had a profession. Lack of education (53.8% of Roma respondents) and professional competences (indicated by 47.9% of the surveyed Roma) were mentioned as the most important factors influencing Roma employability. Two thirds of the surveyed Roma (60%) also mentioned the lack of information on job opportunities while a smaller part of respondents mentioned language barriers. The majority of Roma (82.4%) claimed that the greatest obstacle for their employment was negative attitudes on the part of potential employers towards Roma. The survey of employers' attitudes towards Roma proved that such a claim is well-founded. Almost half of the surveyed employers (47%) stated that it is highly unlikely that Roma would be employed by their company.

In 2007, the majority of the surveyed Roma (82.3%) stated that both men and women should earn money for the household. Regarding gender roles, the majority of men (79.6%) and more than half of the women (60%) agreed with the statement that it is the responsibility of a man to earn money and that a woman should take care of the home and family.

## **Housing**

In general, Lithuanian Roma live a sedentary life. In 2008, more than half of the surveyed Roma (52%) indicated that they have been living over 20 years in their current city, town or village. Over a quarter of the respondents (27%) had lived in the same place for 11–20 years.

According to the 2001 Census data, the average useful floor space per Roma occupant was 10 square meters. The average floor space per occupant according to the national average was 22.8 square meters. There is no data on the number of persons per room, excluding the kitchen, corridor, bathroom and any rooms rented out.

The 2001 Census revealed that Roma lived with a significantly lower level of amenities. The presence of amenities in conventional dwellings of the Roma population and the national total consisted of the following: 41.3% of Roma had running water (79.9% of total population), 26.5% – hot water (67.8% of total dwellings), 30% used bath/shower (72.8% of total population), 32.7% – flushing toilet (68.6% of total population).

In 2008, over one third of the surveyed Roma (38%) lived in a housing that is property of their family, and 31 % of Roma lived in housing rented from the municipality (social housing). Nearly one fifth of the surveyed Roma (20%) lived in housing owned by other relatives (parents, other relatives). Only 8% of the surveyed Roma rent their housing from private owners.

There are no areas of regulated encampments in Lithuania. Also temporary encampments are not a typical phenomenon in Lithuania.

There is no information on forced evictions and expulsions available in Lithuania. However, demolition of illegal houses by the Vilnius City Municipality at the end of 2004 and at the beginning of 2012 in the Vilnius Kirtimai settlement should be taken into account.

According to the latest results of the annual public opinion poll analysing attitudes of Lithuania's residents towards different ethnic and social groups, the Roma remain the most disliked ethnic group in Lithuania. The majority of the respondents (62.6%) indicated that they would not like to live in a neighbourhood with Roma people (63.7% in 2011 and 57.1% in 2010).

## **Health**

Roma health issues and needs have not been studied on a national level since 2005. According to the 2001 Census, the percentage of disabled people was higher in all age groups among the Roma when compared to the total population. The share of the Roma population aged 0–15 with a disability was 1.6 times higher when compared with the total population in this age group, and was related mainly to the disability of boys.

No statistical data is available on limitations in daily activities due to health problems among the Roma population, nor on the medical insurance coverage of Roma.

## **Poverty**

No quantitative data is available on the Roma persons living at the risk of poverty. However, the share of the total population facing the risk of poverty has been increasing in 2005–2010.

In 2001 the support of other persons/ welfare institutions and benefits constituted the main source of livelihood for 66% of the Lithuanian Roma population, while this was the case for 38.7% of the total population. Economic activities (salary, income from individual business and/or farming) were indicated as the main source of income by 2.5% of the Roma population and 32.8% of the total population. Old age pension was indicated as a source of livelihood by 21.6% of the total population and 6.4% of Roma.

In 2008, the majority (44.5%) of the interviewed Roma maintained that their standard of living deteriorated over the last year; one third of Roma surveyed (32.8%) stated that their income did not change and one fifth (19.3%) claimed that their standard of living improved.

In 2007, the majority of the surveyed Roma (56.3%) did not have any debts, and more than one third (38.7%) did. Most of the respondents (21.8%) were indebted to other persons. It had been noticed that most of the debts were related to public utility fees – 20.2% were indebted for electricity, 11.8% for various public utilities of housing, and 4.2% for water. A small part of the surveyed Roma (1.2%) was indebted to the bank.

Although there is no data available on malnutrition and hunger among Lithuanian Roma, in 2007, the majority of the surveyed Roma (43.7%) indicated that during the last 12 months they had received food support.

### **Active citizenship and rights awareness**

Currently only four Roma non-governmental organisations (NGOs) are actively working in Lithuania, and all of them are based in the Vilnius region.

No person of Roma nationality has been elected to the Seimas in from 1992 to 2012. No representative of Roma was elected to a Lithuanian Municipality Council in 2011.

Discrimination based on race or ethnicity is the third most common ground of complaints following social status and sex received by the Office of Equal Opportunities Ombudsperson (OEEO). According to the data provided in the Annual Report of the OEEO, a gradual increase in complaints was recorded and was connected to active actions of the Roma people and NGOs. However, in 2009, the OEEO received notably less complaints on the grounds of race or ethnicity.

The thematic study on the situation of Roma in Lithuania presents an overview of desk research and field research on the areas of education, employment, housing/neighbourhood, health, poverty/economic situation and active citizenship/ rights awareness.

The information provided is based on the following studies which are described more detailed in Annex 4:

- Attitudes of Roma and Employers about Roma Integration in the Labour Market (2007). The data of the research was collected by the Centre of Ethnic Studies in August – September 2007. The research sample was 119 Lithuanian Roma living in 6 different geographical sites in Lithuania and 100 representatives of employers.
- Roma Situation: Roma at the Cross-Roads of Education and the Labour Market (2008). The data of the study was collected in November–December 2008 by the Centre of Ethnic Studies. The research sample was 231 Lithuanian Roma living in different geographical sites of Lithuania. The age of interviewed Roma varied from 12 to 70 years of age; the distribution of age groups in the sample was the following: young Roma (up to 30 years old) – 49.8%, 31–40 years old – 26% and 41years old and older – 24.3%.
- Housing Conditions of Roma and Travellers (2009). A thematic study presenting an overview of the desk research and field research of thematic sections: legal and policy framework, available quantitative and qualitative data and information on the housing conditions of Roma in Lithuania. The report was prepared for FRA by the Centre of Ethnic Studies in March 2009.

A report Lithuanian Roma and Statistics (2005) which analyses and presents quantitative data on the Roma community with reference to the 2001 Census. Although the most elaborated information source on the whole Roma community is available from the 2001 Census and statistical data on the current Roma population is absent, presumably the information collected represents the current situation of the Lithuanian Roma community.

# 1 Roma population

In the 2001 Census, 2,571 persons (2115 in 2011 Census)<sup>1</sup> declared themselves to be Roma/Gypsies<sup>2</sup>, but informal opinions exist that not all Roma may have been reached by the census, hence the actual number could be higher<sup>3</sup>. According to the 2001 Census, the majority of the Roma population lived in urban areas (2,135 persons, 83%), and only 17% of Roma (436 persons) lived in rural areas.<sup>4</sup> Roma lived throughout Lithuania, with concentrations in the major towns: Vilnius (640 persons), Kaunas (364 persons), Panevėžys (141 persons), Šiauliai (170 persons), and Klaipėda (58 persons).<sup>5</sup>

The identity of the Roma in Lithuania is not homogenous. According to research conducted by Polish sociologists, those Roma who identified themselves as Lithuanian Roma lived all over Lithuania; the Roma who indicated that they were Polish Roma (Polska Roma) lived in some rural areas of the Vilnius region; a small group called Fluki related their roots with the Kaliningrad region (currently – Russian Federation); some of the urban Šiauliai Roma indicated that they were Latvian Roma; and a group that lived mainly in the lower settlement of Kirtimai in the city of Vilnius was called Kotlyary (who immigrated from Moldova after World War II).<sup>6</sup> No publications about the linguistic particularities of each of the aforementioned groups in Lithuania are known; all Lithuanian censuses have indicated Romani (gypsy) as one language. The percentage of Roma persons reporting Romani as their mother tongue was 73.2% in 2001.

As the 2001 Census reveals, most of the Roma who live in Lithuania (89.3%) are Lithuanian citizens, and 2.6% of the Roma residing in Lithuania had the nationality of another state. The number of Roma with a foreign nationality was higher in the city of Vilnius and the Šiauliai County. A significant part of the Roma population was stateless – almost 8% nationwide (the status of being stateless is characteristic for only 0.23% of the total population in Lithuania).<sup>7</sup> Over the past ten years, no significant immigration of Roma people from other countries has been reported, although some migration from and to neighbouring regions (Kaliningrad Oblast, Belarus, Latvia) has been noticed.<sup>8</sup>

In 2011, according to the data of the central database of the Residents' Register Service under the Ministry of Interior (*Gyventojų registro tarnyba prie Vidaus reikalų ministerijos*), the

---

<sup>1</sup> Statistics Lithuania (2012) 2011 Population and Housing Census. Available at: [www.stat.gov.lt/en/pages/view/?id=3408](http://www.stat.gov.lt/en/pages/view/?id=3408). Detailed data of 2011 Population and Housing Census will be able by 25 October 2013.

<sup>2</sup> Statistics Lithuania (2002). Population and household census in Lithuania. Population according to gender, age, ethnicity and religion (*Lietuvos gyventojų ir būstų surašymas 2001. Gyventojai pagal lytį, amžių, tautybę ir tikyba*), Vilnius: Statistikos departamentas

<sup>3</sup> Kučinskaitė, E., K. (2005). Lithuanian Roma and Statistics. Report prepared for the Lithuanian Roma Community Union *Roma Mission*, Kaunas, Lithuania.

<sup>4</sup> *Ibid.*

<sup>5</sup> Kučinskaitė, E., K. (2005). Lithuanian Roma and Statistics. Report prepared for the Lithuanian Roma Community Union *Roma Mission*, Kaunas, Lithuania.

<sup>6</sup> Głowacka-Grajper, M. (2003) *Romowie na Litwie: nowe problemy w nowym państwie* In: E. Nowicka (red.), *Romowie o sobie i dla siebie*, Warszawa: IS UW 2003, pp. 61–103.

<sup>7</sup> Kučinskaitė, E., K. (2005). Lithuanian Roma and Statistics. Report prepared for the Lithuanian Roma Community Union *Roma Mission*, Kaunas, Lithuania

<sup>8</sup> Centre of Ethnic Studies (2008). Romų padėties tyrimas: romai švietimo ir darbo rinkos sankirtoje (Roma Situation: Roma at the Cross-Roads of Education and the Labour Market). Available at: [www.ces.lt/wp-content/uploads/2008/06/STI\\_TMID\\_Romu-padeties-tyrimas-2008\\_ataskaita.pdf](http://www.ces.lt/wp-content/uploads/2008/06/STI_TMID_Romu-padeties-tyrimas-2008_ataskaita.pdf). The hyperlink was accessed on 25 July 2012.



number of Roma in Lithuania was 2,900 persons.<sup>9</sup> The first data of the 2011 Census on ethnicity will be available in October 2012 and March 2013.<sup>10</sup> There is no evidence to conclude that the general number of Roma in Lithuania is significantly decreasing or increasing. However, the experience of the emigration of the Lithuanian population in the current decade has influenced the Roma community as well. The information and data collected for the survey *Roma Situation: Roma at the Cross-Roads of Education and the Labour Market ( Romų padėties tyrimas: romai švietimo ir darbo rinkos sankirtoje)*<sup>11</sup> carried out by the Centre of Ethnic Studies of the Institute for Social Research at the end of 2008 indicates that a significant proportion of Roma have moved to foreign countries (e.g. Kaunas, the second largest city of Lithuania, used to have a rather significant Roma community, whereas at present few Roma families live there), but Roma from neighbouring regions, such as the Kaliningrad Oblast (Russian Federation), have come to Lithuania and migration within Lithuania has taken place.

Secondary sources refer to the stable size of the Roma population in Lithuania, e.g. statistical data on Roma children at secondary schools of Lithuania show the tendency of steady numbers of Roma children at schools (e.g. 571 in 2000–2001, 579 in 2008–2009, 572 in 2011–2012).<sup>12</sup> It is however hard to assess the impact of any policy measures to recruit Roma to schools since over the past years no relevant initiatives could be identified.

In general, Lithuanian Roma live a sedentary life. According to 2008 survey data, over half of Roma surveyed (52%) indicate that they have been living over 20 years in their current city, town or village. Over one-fourth of respondents (27%) have lived in the same place for 11–20 years. Approximately one fifth (21%) of Roma surveyed indicate that they have lived in their current place for around 10 years. The duration of living in the current living place or housing depends on age: middle-aged Roma are slightly less sedentary. In the age group of 26–40 years old, the majority (74%) have lived in their current place for less than 5 years, and this age group makes up 70% of those who have lived in the same place for 6–10 years. Correspondingly, Roma of 26–35 years old change their living place more often.<sup>13</sup>

The phenomenon of itinerant Roma is not characteristic to Lithuania; no data is available on itinerant Roma in Lithuania.

No disaggregated data on Roma by other characteristics (gender, disability, etc.) are available.

---

<sup>9</sup> Statistics Lithuania (2011). *Statistical Yearbook of Lithuania 2011*. Available at: [www.stat.gov.lt/uploads/metrastris/1\\_LSM\\_2011\\_Lt.pdf?PHPSESSID](http://www.stat.gov.lt/uploads/metrastris/1_LSM_2011_Lt.pdf?PHPSESSID). The hyperlink was accessed on 16 April 2012.

<sup>10</sup> Communication of NFP-Lithuania with Statistics Lithuania (*Lietuvos statistikos departamentas*) (29 March 2012).

<sup>11</sup> Centre of Ethnic Studies (2008). *Romų padėties tyrimas: romai švietimo ir darbo rinkos sankirtoje* (Roma Situation: Roma at the Cross-Roads of Education and the Labour Market). Available at: [www.ces.lt/wp-content/uploads/2008/06/STI\\_TMID\\_Romu-padeties-tyrimas-2008\\_ataskaita.pdf](http://www.ces.lt/wp-content/uploads/2008/06/STI_TMID_Romu-padeties-tyrimas-2008_ataskaita.pdf). The hyperlink was accessed on 25 July 2012.

<sup>12</sup> Centre of Ethnic Studies (2008). The research sample was 231 Lithuanian Roma living in different geographical sites of Lithuania. The data was collected in November–December 2008.

Communication of NFP-Lithuania with the Ministry of Culture (2 April 2012).

<sup>13</sup> Centre of Ethnic Studies (2008). The research sample was 231 Lithuanian Roma living in different geographical sites of Lithuania. The data was collected in November–December 2008.

## 2 Education

Statistical data and secondary sources reveal a poor situation for Roma in the field of education.

According to the report *Lithuanian Roma and Statistics*, which presents data and an analysis of the 2001 Census, the share of Roma who do not reach secondary level education is 71% in Lithuania. This indicator is equal to 41% for the total population of Lithuania.<sup>14</sup>

The main studies on the education of Roma in the period of 2006–2012 were carried out by the Centre of Ethnic Studies (since 2010 – the Institute for Ethnic Studies). In 2007 a study *Attitudes of Roma and Employers about Roma Integration in the Labour Market (org. Romų ir darbdavių nuostatos dėl romų integracijos į darbo rinką)* was conducted, and 119 Roma respondents and 100 employers from Vilnius, Kaunas, Šiauliai, Panevėžys, Šalčininkai and Klaipėda were interviewed. This study analysed the Roma employment situation and attitudes of potential employers towards Roma people. Additionally, a significant part of the study addressed Roma participation in the education system and their involvement with vocational programmes.<sup>15</sup>

The latest study in the field of Roma education – *Roma Situation: Roma at the Cross-Roads of Education and the Labour Market* was carried out in 2008. This research involves a survey of 231 Roma respondents and interviews with 50 experts from various geographical sites of Lithuania. The aim of the research was to analyse issues of Roma adaptation and integration into Lithuanian society and to reveal factors of successful socialisation of young Roma (up to 29 years old).<sup>16</sup>

No recent studies and reports concerning Roma education have been published since 2008. The information provided below is based on the previously mentioned studies.

### a. Pre-school/kindergarten

There is no disaggregated statistical data on the number of Roma children aged 4 to 7 years old attending pre-school. In the total population, 54.6% of all 1–6 year-old children attended pre-school and pre-primary education groups in 2011.<sup>17</sup> In a 2008 survey of Roma parents, it was indicated that 30.7% of Roma children attended pre-school establishments or pre-primary education groups. Participation in after school activities was also uncommon amongst Roma.<sup>18</sup>

---

<sup>14</sup> Kučinskaitė, E., K. (2005). *Lithuanian Roma and Statistics*. Report prepared for the Lithuanian Roma Community Union *Roma Mission*, Kaunas, Lithuania.

<sup>15</sup> Centre of Ethnic Studies (2007). *Romų ir darbdavių nuostatos dėl romų integracijos į darbo rinką (Attitudes of the Roma and the Employers toward Integration into the Labour Market)*.

<sup>16</sup> Centre of Ethnic Studies (2008). *Romų padėties tyrimas: romai švietimo ir darbo rinkos sankirtoje (Roma Situation: Roma at the Cross-Roads of Education and the Labour Market)*. Available at: [www.ces.lt/wp-content/uploads/2008/06/STI\\_TMID\\_Romu-padeties-tyrimas-2008\\_ataskaita.pdf](http://www.ces.lt/wp-content/uploads/2008/06/STI_TMID_Romu-padeties-tyrimas-2008_ataskaita.pdf). The hyperlink was accessed on 25 July 2012.

<sup>17</sup> Statistics Lithuania (2011). *Statistical Yearbook of Lithuania 2011*. Available at: [www.stat.gov.lt/uploads/metrastis/1\\_LSM\\_2011\\_Lt.pdf?PHPSESSID](http://www.stat.gov.lt/uploads/metrastis/1_LSM_2011_Lt.pdf?PHPSESSID). The hyperlink was accessed on 16 April 2012.

<sup>18</sup> Centre of Ethnic Studies (2008). *Romų padėties tyrimas: romai švietimo ir darbo rinkos sankirtoje (Roma Situation: Roma at the Cross-Roads of Education and the Labour Market)*. Available at: [www.ces.lt/wp-](http://www.ces.lt/wp-)

On April 26<sup>th</sup> 2012, a new legal act concerning the rules of compulsory pre-school and pre-primary education appointment was issued by the Ministry of Education and Science of the Republic of Lithuania<sup>19</sup>. In accordance with paragraphs 6 and 7 of the law, pre-school and pre-primary education is compulsory for children living in a difficult family situation (i.e. cases when parents, due to various factors, are not able to meet the social, cultural and educational needs of their children). A large part of Roma families will fall into the group of families whose children will be appointed to the compulsory pre-school and pre-primary education.

## **b. Compulsory school attendance**

Statistical data on Roma children in secondary schools show the tendency of steady numbers of Roma children in schools (e.g. 579 in 2008–2009, 572 in 2011–2012).<sup>20</sup> Yet, a number of Roma children remain outside the formal education system— according to the 2001 Census, the percentage of children aged 7–14 who did not attend school was 1.25% of the total population of Lithuania (5 243 children) and 15% of Roma children of this age (65 children).<sup>21</sup> No recent statistical data are available.

There is a positive trend regarding a timely school start of Roma children. The 2008 survey showed that 54% of adult Roma surveyed and 77% of their children started attending school at the age of 6–7 years old (*Annex 2. Table 1.1 and Table 1.2*). In most families all children start school at the same age (including cases when some children start school at age 10). According to the latest study results, a distinct part of young Roma (32% of those below 18 years old) started school at the age of 10 or later. This part is relatively large in comparison with older generations of Roma. Therefore, the timely inclusion into the school system remains important for the youngest Roma generation.<sup>22</sup>

While estimating the age of school start and termination, it is possible to conclude that, on average, the surveyed Roma attended school for 6–7 years and finished five grades (*Annex 2. Table 1.3*). More than half of the surveyed Roma (56%) did not acquire higher education than their parents.<sup>23</sup>

The main turning point influencing the decision of Roma students regarding further education takes place at the 6<sup>th</sup> – 8<sup>th</sup> grades or around age 16 (the age of compulsory education) (*Annex*

---

content/uploads/2008/06/STI\_TMID\_Romu-padeties-tyrimas-2008\_ataskaita.pdf. The hyperlink was accessed on 25 July 2012.

<sup>19</sup> Lithuania (2012), Due to compulsory pre-school and pre-primary education setting and appointment approval (*Dėl privalomo ikimokyklinio ir priešmokyklinio ugdymo nustatymo ir skyrimo tvarkos aprašo patvirtinimo*), No V-735/A1-208, 26 April 2012.

<sup>20</sup> Centre of Ethnic Studies (2008). Romų padėties tyrimas: romai švietimo ir darbo rinkos sankirtoje (Roma Situation: Roma at the Cross-Roads of Education and the Labour Market). Available at: [www.ces.lt/wp-content/uploads/2008/06/STI\\_TMID\\_Romu-padeties-tyrimas-2008\\_ataskaita.pdf](http://www.ces.lt/wp-content/uploads/2008/06/STI_TMID_Romu-padeties-tyrimas-2008_ataskaita.pdf). The hyperlink was accessed on 25 July 2012.

<sup>21</sup> Kučinskaitė, E., K. (2005). Lithuanian Roma and Statistics. Report prepared for the Lithuanian Roma Community Union *Roma Mission*, Kaunas, Lithuania.

<sup>22</sup> Centre of Ethnic Studies (2008). Romų padėties tyrimas: romai švietimo ir darbo rinkos sankirtoje (Roma Situation: Roma at the Cross-Roads of Education and the Labour Market). Available at: [www.ces.lt/wp-content/uploads/2008/06/STI\\_TMID\\_Romu-padeties-tyrimas-2008\\_ataskaita.pdf](http://www.ces.lt/wp-content/uploads/2008/06/STI_TMID_Romu-padeties-tyrimas-2008_ataskaita.pdf). The hyperlink was accessed on 25 July 2012.

<sup>23</sup> Centre of Ethnic Studies (2008). Romų padėties tyrimas: romai švietimo ir darbo rinkos sankirtoje (Roma Situation: Roma at the Cross-Roads of Education and the Labour Market). Available at: [www.ces.lt/wp-content/uploads/2008/06/STI\\_TMID\\_Romu-padeties-tyrimas-2008\\_ataskaita.pdf](http://www.ces.lt/wp-content/uploads/2008/06/STI_TMID_Romu-padeties-tyrimas-2008_ataskaita.pdf). The hyperlink was accessed on 25 July 2012.

2. *Table 1.6*). Only a minor part of Roma surveyed reach the grade equivalent to their age. Most are simply removed from students' lists because of poor attendance.<sup>24</sup>

After quitting school, the majority of Roma children do not engage in any activity/employment (25.3%), a similar portion of the respondents start families (24%), while others assist their parents in the household (14.7%), start to attend courses and vocational trainings (8%), begin to work (8%) and take care of other family members (children) (8%) (*Annex 2. Table 1.7*).<sup>25</sup>

The peculiarity of the Roma housing situation and extreme poverty has an impact on the school attendance of Roma children. Experts notice that school attendance especially decreases during the cold time of the year (houses are poorly heated in the morning, in some cases – there is no electricity, children do not have winter boots, etc.).<sup>26</sup>

### c. Educational attainment

According to the 2001 Census, 25.3% of Roma did not finish primary school or were illiterate (national average is 4.6%), 31% of Roma finished only primary school (national average is 20.8%) and 43.2% attained a basic or higher education (national average 74.1%).<sup>27</sup>

In 2008, one fifth of the surveyed Roma (20.3%) did not attend school and have not finished any grade. A quarter of the surveyed Roma (25.5%) attended only primary school and finished 1–4 grades. 36% of respondents attended secondary school, but finished less than 8 grades, which means that they did not attain a basic education. Only 17.3% of Roma finished 9 or more grades of secondary school.<sup>28</sup> (*Annex 2. Table 1.3; 1.4*).

Gender differences in education attainment can be noticed – more Roma women (27.2%) than men (10.5%) did not attend school or did not finish at least one grade. More men (24.2%) than women (12.5%) completed 9–12 grades at school. See *Annex 2, Table 1.5*.

School attendance declines drastically for Roma youth above 14 years of age. According to the data of the 2001 Census, 93 % of the total youth population aged 15–18 were involved in some kind of formal education, while the majority (59%) of Roma youth aged 15–18 were not involved in any form of formal education.<sup>29</sup>

Based on the statistical data of 2000–2008 on Roma children at secondary schools in Lithuania, it is concluded that although the majority of Roma students are concentrated in the primary education level (1<sup>st</sup>–4<sup>th</sup> grades), this number has started to decrease, as in 2008 it

---

<sup>24</sup> *Ibid.*

<sup>25</sup> *Ibid.*

<sup>26</sup> *Ibid.*

<sup>27</sup> Statistics Lithuania (2002). Population and household census in Lithuania. Population according to gender, age, ethnicity and religion (*Lietuvos gyventojų ir būstų surašymas 2001. Gyventojai pagal lytį, amžių, tautybę ir tikybą*), Vilnius: Statistikos departamentas.

<sup>28</sup> Centre of Ethnic Studies (2008). Romų padėties tyrimas: romai švietimo ir darbo rinkos sankirtoje (Roma Situation: Roma at the Cross-Roads of Education and the Labour Market). Available at: [www.ces.lt/wp-content/uploads/2008/06/STI\\_TMID\\_Romu-padeties-tyrimas-2008\\_ataskaita.pdf](http://www.ces.lt/wp-content/uploads/2008/06/STI_TMID_Romu-padeties-tyrimas-2008_ataskaita.pdf). The hyperlink was accessed on 25 July 2012.

<sup>29</sup> Kučinskaitė, E., K. (2005). Lithuanian Roma and Statistics. Report prepared for the Lithuanian Roma Community Union *Roma Mission*, Kaunas, Lithuania.

comprised of half (52%) of all Roma students, whereas in 1996–1997 out of 276 Roma students in schools, 275 were in primary grades.<sup>30</sup>

#### **d. Vocational training/qualifications**

Only a small number of school children (8%) start to attend vocational courses and trainings after quitting school. The majority of Roma do not attain the compulsory basic level of education (ten years of schooling) required for entering vocational schools.<sup>31</sup>

In 2007, more than one third of the respondents (37%) stated that during last five years they participated in some courses and/or vocational trainings. Most of them (20.5%) were participants of the trainings arranged in the frame of the project *The Creation and Testing of the Mechanism of Integration of the Roma People into the Labour Market* (org. *Romų integracijos į darbo rinką mechanizmo sukūrimas ir išbandymas*) implemented by the NGO *Lithuanian Children's Fund* (org. *Lietuvos vaikų fondas*). The project was implemented in the framework of the EU Equal Initiative in 2004–2008. According to the results of the project, 18.2% of the respondents attended driving license courses and 15.9% were learning the Lithuanian language.<sup>32</sup>

The majority of the surveyed Roma (68%) indicated the Lithuanian Children Fund project as the main provider of vocational trainings. The public institution Roma Community Centre (org. *Romų visuomenės centras*) was also mentioned among other organisers of similar courses. The smallest number of Roma people attended courses held by the Labour Exchange Office (7.3%) and other institutions (14.6%).<sup>33</sup>

Most of the courses are short term and not all of them are directly related to employment, thus they do not have a direct impact on Roma integration into the labour market. As the results of the study *Attitudes of the Roma and the Employers toward Integration into the Labour Market (2007)* show, the main function of such trainings and courses is to develop social skills and common competences.

#### **e. Different types of schooling (home education, special schools, etc.)**

There is no statistical data available on special schools for Roma children, or on the number of children learning at home. Roma children usually attend general education schools, but are often assigned to special education programmes. The interviewed teachers argued that children were often assigned to these programmes due to poor school attendance.<sup>34</sup>

Schools have no specific plans on how to solve problems related to poor attendance of Roma children. The interviewed experts working with Roma children (53 experts were interviewed for

---

<sup>30</sup> Centre of Ethnic Studies (2008). *Romų padėties tyrimas: romai švietimo ir darbo rinkos sankirtoje* (Roma Situation: Roma at the Cross-Roads of Education and the Labour Market). Available at: [www.ces.lt/wp-content/uploads/2008/06/STI\\_TMID\\_Romu-padeties-tyrimas-2008\\_ataskaita.pdf](http://www.ces.lt/wp-content/uploads/2008/06/STI_TMID_Romu-padeties-tyrimas-2008_ataskaita.pdf). The hyperlink was accessed on 25 July 2012.

<sup>31</sup> *Ibid.*

<sup>32</sup> Centre of Ethnic Studies (2007). *Romų ir darbdavių nuostatos dėl romų integracijos į darbo rinką* (Attitudes of the Roma and the Employers toward Integration into the Labour Market).

<sup>33</sup> *Ibid.*

<sup>34</sup> Centre of Ethnic Studies (2008). *Romų padėties tyrimas: romai švietimo ir darbo rinkos sankirtoje* (Roma Situation: Roma at the Cross-Roads of Education and the Labour Market). Available at: [www.ces.lt/wp-content/uploads/2008/06/STI\\_TMID\\_Romu-padeties-tyrimas-2008\\_ataskaita.pdf](http://www.ces.lt/wp-content/uploads/2008/06/STI_TMID_Romu-padeties-tyrimas-2008_ataskaita.pdf). The hyperlink was accessed on 25 July 2012.

the study including social pedagogues, representatives of school administration and teachers) suggested that cooperation among several institutions and fostering individual relations with Roma parents would be the most effective way to solve the problems of the Roma children at school.<sup>35</sup>

#### **f. Issues of segregation and integration**

Studies show that many Roma children are multi-lingual; yet their language skills differ significantly. The study *Roma Situation: Roma at the Cross-Roads of Education and the Labour Market* recommends that special attention would be paid to assist primary school children with poor language skills. The majority of the interviewed teachers maintain that school attendance by Roma children highly influences their learning results, i.e. when Roma children attend school, their achievements do not differ from the average class achievement. Yet, teachers maintain that the majority of Roma are studying under the programmes of special needs. The applied programmes do not have a significant impact on school graduation or on the number of completed grades – only a few Roma finish secondary schools.<sup>36</sup>

It is noticed that Roma parents prefer sending their children to schools where some Roma children are already studying, even if the school is far from home. In many cases, Roma children attend the same school from which their parents have graduated. This phenomenon shows their parents' distrust of the education system, and an awareness of negative attitudes towards Roma and their children.<sup>37</sup>

#### **g. Experiences and perceptions of discrimination**

An investigation on the matter of discrimination was initiated by the Office of Equal Opportunities Ombudsperson, when articles on a special class designated for Roma children in a school in Vilnius were published in the media.<sup>38</sup> The class called “Č” (as in *čigonai* – gypsy in Lithuanian) was established in Vilnius Saulėtekis secondary school. Despite different ages and learning abilities, only Roma children studied in this class. After the investigation by the Office of Equal Opportunities Ombudsperson, it was decided that the existence of such a class and separation of Roma children from other pupils is a violation of human and equal rights; thus it was suggested to disband the class.<sup>39</sup> After the school stopped the practice of placing Roma children in a separate class, the investigation was discontinued and the school did not receive any sanctions.

---

<sup>35</sup> *Ibid.*

<sup>36</sup> *Ibid.*

<sup>37</sup> *Ibid.*

<sup>38</sup> Delfi.lt (2011) ‘Dėl romų vaikų padėties 3 Č klasėje pradėtas tyrimas’, 18 March 2011. Available at: [www.delfi.lt/news/daily/education/del-romu-vaiku-padeties-3c-klaseje-pradetas-tyrimas.d?id=43289319](http://www.delfi.lt/news/daily/education/del-romu-vaiku-padeties-3c-klaseje-pradetas-tyrimas.d?id=43289319). The hyperlink was accessed on 25 July 2012.

<sup>39</sup> Kasdien.lt (2011) ‘Čigonai Č klasėje nesimokys’, 5 May 2011. Available at: [www.kasdien.lt/Pradzia/Naujienos/Lietuvoje/Cigonai-C-klaseje-nesimokys](http://www.kasdien.lt/Pradzia/Naujienos/Lietuvoje/Cigonai-C-klaseje-nesimokys). The hyperlink was accessed on 25 July 2012.

## Major projects or initiatives

During the past two years, several initiatives related to promoting the integration of Roma schoolchildren in school and developing their learning skills could be mentioned.

In 2010, an NGO *Lietuvos sakaliukų sąjunga* (Lithuanian Young Falcon Union) initiated a project “**Help Me to Fit In: First Steps at School**” (*Padėk pritapti: pirmi žingsniai mokykloje*) which was devoted to supporting Roma children during their first years at school and developing their social skills. The project volunteers worked with Roma children living in the Kirtimai settlement in Vilnius. In the framework of the project, volunteers visited Roma children at home and at the Roma Community Centre, helped them with their homework and helped them to acquire needed school supplies. After-school activities intended to develop social skills of children were also arranged. During the project, close communication with teachers and parents was maintained. According to the project initiators, children that were part of the project showed better performance at school, nevertheless, the risk of the early school drop-out remained high as the project was not able to solve structural issues influencing school attendance, such as housing conditions and extreme poverty of families.<sup>40</sup>

In 2010, a bilingual education project was initiated in Vilnius Senamiesčio secondary school. In the framework of the project, communication skills of Roma school children were developed and their knowledge of the Lithuanian language was strengthened. Furthermore, the pedagogues’ experience of working with bilingual Roma children was improved.<sup>41</sup>

Under the EU employment and social solidarity programme PROGRESS a project “**C.A.F.E. Changing Attitude Fostering Equality**” has been implemented since 2011. The main objectives of the project are to foster different interactive ways of working with local Roma people to promote equity and understanding of their everyday reality. The activities of the project contribute to greater representation and participation of the vulnerable groups in society. During the period of the project two Roma school mediators/ assistants were employed at two Vilnius secondary schools; a training for secondary school pedagogues working with Roma children in other Lithuanian towns was organized, and one legal training for Roma people led by community NGO leaders „**Recognize discrimination**“ will take place.<sup>42</sup>

---

<sup>40</sup> Communication of NFP-Lithuania with project *Help Me to Fit In: First Steps at School* (org. *Padėk pritapti: pirmi žingsniai mokykloje*) coordinators (11 July 2012).

<sup>41</sup> Europe Information Centre (2012) Round table discussion ‘Roma in the European Union and Lithuania’, 11 July 2012.

<sup>42</sup> Communication of NFP-Lithuania with the Office of Equal Opportunities Ombudsperson (03 September 2012).

### 3 Employment

According to data from the Vilnius Local Labour Exchange Office on the 1<sup>st</sup> of July 2012, there were 158 unemployed Roma registered (0.3 per cent of all registered unemployed persons in Vilnius city).<sup>43</sup> On the 1<sup>st</sup> of September 2011, there were 73 unemployed Roma registered (0.2% of all registered unemployed persons in Vilnius city).<sup>44</sup> The increase in registered unemployment of Roma might be related to changes in payment of social benefits and medical insurance. No statistical data is available concerning unemployment of Roma in other areas of Lithuania.

The 2001 Census reveals that the employment of the labour force was considerably lower among Roma – unemployment in the Roma labour force (aged 15 and above) was 69%, and 19% in the total population. The unemployment levels were the following: 76.9% among Roma and 27.4% among the total population in the 15– 24 age group; 65.1% among Roma and 18.9% among the total population in the 25– 54 age group; 70.4% among Roma and 17.1% among the total population in the 55-64 age group.

Several studies have been carried out on the topic of Roma employment in the period of 2006–2012. Amongst the most important were studies carried out by the Centre of Ethnic Studies – *Attitudes of Roma and Employers on Integration in the Labour Market*<sup>45</sup> in 2007 and *Roma Situation: Roma at the Cross-Roads of Education and the Labour Market*<sup>46</sup> in 2008.

#### a. Paid employment

In 2008 the majority of the surveyed Roma identified themselves as unemployed (56.7%), while 40.7% of the respondents stated that they were currently employed or involved in activities that generate income. The interviewed Roma were mainly involved in informal individual activities, such as collecting scrap metal, fortune-telling or conducting small trade in the market. Only 8.7% of the surveyed Roma were employed under labour contracts and 6.1% indicated they were working without a contract (*Annex 2. Table 2.1*).<sup>47</sup>

#### b. Self-employment

There is no disaggregated data of self-employed Roma. In 2008, 1.7% of the surveyed Roma had purchased a business licence for individual business.<sup>48</sup>

---

<sup>43</sup> Communication of NFP-Lithuania with Vilnius Local Labour Exchange Office (*Vilniaus teritorinė darbo birža*) (29 July 2012, 27 September 2011).

<sup>44</sup> *Ibid.*

<sup>45</sup> Centre of Ethnic Studies (2007). Romų ir darbdavių nuostatos dėl romų integracijos į darbo rinką (*Attitudes of the Roma and the Employers toward Integration into the Labour Market*).

<sup>46</sup> Centre of Ethnic Studies (2008). Romų padėties tyrimas: romai švietimo ir darbo rinkos sankirtoje (Roma Situation: Roma at the Cross-Roads of Education and the Labour Market). Available at: [www.ces.lt/wp-content/uploads/2008/06/STI\\_TMID\\_Romu-padeties-tyrimas-2008\\_ataskaita.pdf](http://www.ces.lt/wp-content/uploads/2008/06/STI_TMID_Romu-padeties-tyrimas-2008_ataskaita.pdf). The hyperlink was accessed on 25 July 2012.

<sup>47</sup> *Ibid.*

<sup>48</sup> Centre of Ethnic Studies (2008). Romų padėties tyrimas: romai švietimo ir darbo rinkos sankirtoje (Roma Situation: Roma at the Cross-Roads of Education and the Labour Market). Available at: [www.ces.lt/wp-content/uploads/2008/06/STI\\_TMID\\_Romu-padeties-tyrimas-2008\\_ataskaita.pdf](http://www.ces.lt/wp-content/uploads/2008/06/STI_TMID_Romu-padeties-tyrimas-2008_ataskaita.pdf). The hyperlink was accessed on 25 July 2012.



### c. Communal work and other forms of payment schemes

No data available on communal work of Roma and other forms of payment schemes.

### d. Unemployment

In 2008, registered unemployment in Lithuania was 3.4% among the total working age population. During the economic crisis, registered unemployment started to increase and reached 9.4% in 2009 and 14.5% in 2010. In 2011, the registered unemployment decreased to 11.7%.<sup>49</sup>

According to the latest data from the Vilnius Local Labour Exchange Office, by the 1<sup>st</sup> of July 2012 there were 158 Roma registered as unemployed (0.3% of all registered unemployed persons in Vilnius region). 45% of them were men and 55% women. The highest percentage of unemployed Roma was registered in the 25–34 age group (27.8%).<sup>50</sup> No data is available on unemployment of Roma in other regions of Lithuania.

The majority of registered unemployed Roma in Vilnius do not have professional competences (91.8%); 19 of 73 persons do not have primary education and only four indicated that they have secondary education.<sup>51</sup> No recent data is available on unemployed Roma in other regions of Lithuania.

Results of the 2007 study indicate that the majority of the surveyed Roma did not have any profession (83.2%), while 16% stated that they had a profession. It is noticed that a part of the mentioned professions were gained because of specific conditions, such as participation in projects (e.g. vocational trainings for floral design in the frame of an EQUAL project) or professions gained while being in prison (e.g. sewing is a popular vocation among imprisoned women).<sup>52</sup>

The lack of education (53.8% of Roma respondents) and professional competences (indicated by 47.9% of the surveyed Roma) were mentioned as the most important factors influencing Roma employability. Two thirds of the surveyed Roma (60%) also mentioned the lack of information on job opportunities while a smaller part of respondents mentioned language barriers. The majority of Roma (82.4%) claimed that the greatest obstacle for their employment were the negative attitudes of potential employers towards Roma. The survey of employers' attitudes towards Roma proved that such a claim is well-founded. Almost half of the surveyed employers (47%) stated that it is highly unlikely that Roma could be employed by their company.<sup>53</sup>

The majority of Roma (82.3%) stated that both men and women should earn money for the household. Regarding gender roles, the majority of men (79.6%) and more than half of the

---

<sup>49</sup> Lithuanian Statistics (2010). Available at: [www.stat.gov.lt/lt/pages/view/?id=2556](http://www.stat.gov.lt/lt/pages/view/?id=2556).

<sup>50</sup> Communication of NFP-Lithuania with Vilnius Local Labour Exchange Office (*Vilniaus teritorinė darbo birža*) (29 July 2012, 27 September 2011).

<sup>51</sup> *Ibid.*

<sup>52</sup> Centre of Ethnic Studies (2007). Romų ir darbdavių nuostatos dėl romų integracijos į darbo rinką (Attitudes of the Roma and the Employers toward Integration into the Labour Market).

<sup>53</sup> Centre of Ethnic Studies (2007). Romų ir darbdavių nuostatos dėl romų integracijos į darbo rinką (Attitudes of the Roma and the Employers toward Integration into the Labour Market).

women (60%) agreed with the statement that it is the responsibility of a man to earn money and that a woman should take care of the home and family.<sup>54</sup>

In 2001, the proportion between women and men supported by family and/or other persons was equal for the total population of Lithuania and the Roma population (92 women per 100 men), showing the same level of gender inequality.<sup>55</sup>

#### **e. Child labour**

Roma join gainful employment at a relatively early age. More than a quarter of the respondents (26.8%) claimed that they started to work being under the age of 16, which is the compulsory age of education in Lithuania (*Annex 2, Table 2.2*).<sup>56</sup>

There are no detailed statistical data available on Roma children aged 7 to 15 who work outside their homes.

#### **f. Old age pension**

No data are available on Roma aged 18 and above stating that they are or will be entitled to private or state pension when they reach the age of retirement.

According to Lithuanian laws, persons who receive a state pension must have 15 years working experience.<sup>57</sup> Given the Roma employment situation, a great part of Roma will not be able to receive old age pension.

According to the 2001 Census, old age pensions constitute the main source of income for 6.5% of the Roma population and 21.6% for the total population.<sup>58</sup>

#### **g. Experiences and perceptions of discrimination**

A case of discrimination against a Roma woman was brought to court at the end of 2007. A Vilnius based human rights advocacy NGO assisted the plaintiff, by exercising a situation testing method, to prove that discrimination did actually happen during the recruitment process of the woman at a café. A Lithuanian woman of a similar age as the complainant was sent to the café a few hours later, after the Roma woman had been told that the place is no longer vacant. The Lithuanian woman was immediately accepted. The results from the situation testing were approved by a bailiff and later used in court to successfully challenge discriminatory behaviour. The court ruled in favour of the applicant establishing direct discrimination, and in accordance with the Labour Code awarded her with a compensation of 2,864.98 Litas (approximately 830 Euros). This was the first case when direct discrimination was proved in court.

---

<sup>54</sup> *Ibid.*

<sup>55</sup> Kučinskaitė, E., K. (2005). Lithuanian Roma and Statistics. Report prepared for the Lithuanian Roma Community Union *Roma Mission*, Kaunas, Lithuania.

<sup>56</sup> Centre of Ethnic Studies (2008). Romų padėties tyrimas: romai švietimo ir darbo rinkos sankirtoje (Roma Situation: Roma at the Cross-Roads of Education and the Labour Market). Available at: [www.ces.lt/wp-content/uploads/2008/06/STI\\_TMID\\_Romu-padeties-tyrimas-2008\\_ataskaita.pdf](http://www.ces.lt/wp-content/uploads/2008/06/STI_TMID_Romu-padeties-tyrimas-2008_ataskaita.pdf). The hyperlink was accessed on 25 July 2012.

<sup>57</sup> Lithuania (1994), Law on social insurance pensions (*LR Valstybinio socialinio draudimo pensijų įstatymas*), No 1-549, 18 July 1994, last amendment 01 January 2010.

<sup>58</sup> Kučinskaitė, E., K. (2005). Lithuanian Roma and Statistics. Report prepared for the Lithuanian Roma Community Union *Roma Mission*, Kaunas, Lithuania.

So far this remains the only case of compensation for a victim of discrimination and financial penalty for the perpetrator.<sup>59</sup> (*More information in Annex 2*)

## Major projects or initiatives

In the period 2006–2012 several projects related to the integration of Roma into the labour market have been implemented. An EQUAL project “*The Creation and Testing of the Mechanism of Integration of the Roma People into the Labour Market*” was implemented in 2004–2008.<sup>60</sup> The objectives of the project were the following: training of work and additional skills; breaking of the inveterate stereotypes through direct, personal communication as well as through mass media; changing the employers’ negative attitudes and motives of their actions; acquisition of new experiences of communication and cooperation by the Roma themselves. According to the results of the project, more than 100 Roma from different parts of Lithuania completed driving courses, 43 received driving licenses, 7 work places were created and 17 Roma were employed.<sup>61</sup>

Another important initiative is a project “*Turn Back to Roma: Innovative Measures of Roma Participation in the Labour Market*”, which has been implemented by the United Nation Development Programme Lithuania (UNDP) in partnership with the Roma Community Centre, the NGO “SOPA,” and the Vilnius Municipality Social Assistance Centre since 2010. The aim of the project is to develop and test a multifaceted approach for including Roma in the labour market, motivating and supporting them in keeping their job positions, as well as elaborating and applying methodologies for participation in social life. The project employs 17 people including some Roma employed as social work assistants. It is planned that at least 80 Roma will be involved in project activities, and that around 30% of participants will be employed.<sup>62</sup>

In 2010, the Labour Exchange Office of Vilnius opened an independent labour search terminal in Kirtimai, where a large community of Roma lives.<sup>63</sup>

---

<sup>59</sup> European Network Against Racism (ENAR) (2008). Shadow report 2008, Racism in Lithuania, October 2009, Brussels.

<sup>60</sup> Integration of Roma. Available at: [www.scribd.com/doc/22409625/Romu-integracija](http://www.scribd.com/doc/22409625/Romu-integracija).

<sup>61</sup> Europe Information Centre (2012) Round table discussion ‘Roma in the European Union and Lithuania’, 11 July 2012.

<sup>62</sup> Background of the Project. Available at: [www.atsigrezkiromus.lt/english.html](http://www.atsigrezkiromus.lt/english.html).

<sup>63</sup> Europe Information Centre (2012) Round table discussion ‘Roma in the European Union and Lithuania’, 11 July 2012.

## 4 Housing and neighbourhood

Data on housing, either in statistical surveys or in state or municipal institutions, are collected without registering the ethnicity of residents. The housing and living conditions of ethnic minorities, including Roma, remain an under-researched field.

A thematic study on *Housing Conditions of Roma and Travellers* was prepared by the Centre of Ethnic Studies in 2009. This study is an overview of the desk research and field research of legal and policy framework, quantitative and qualitative data and information on the housing conditions of Roma in Lithuania.

At the end of 2008, the Vilnius City Centre of Social Support carried out a needs assessment survey, *Roma Living in Kirtimai Settlement on their Needs and Requests Regarding Social Housing*. In total, 86 household heads and their family members (in total 233 adults) were questioned. The survey also provided information on 195 Roma children, 113 of whom were of school age.<sup>64</sup>

A legal analysis of issues concerning Vilnius Roma housing was carried out by the NGO Human Rights Monitoring Institute (*Žmogaus teisių stebėjimo institutas*) in 2006. The report of the study, *The Problem of Vilnius Roma Housing: a Legal Analysis*,<sup>65</sup> was part of a larger project on Roma rights prompted by the fact that the issue of housing in the impoverished Roma settlement Kirtimai has been continuously neglected. The study highlighted that legal uncertainty regarding housing makes Roma housing rights vulnerable and is not in accordance with the international requirements for the protection of national minorities.

One of the most elaborate sources of quantitative information on Roma housing is the 2005 Report *Lithuanian Roma and Statistics* that presents data and an analysis of the 2001 Census.

Aspects of Roma housing and neighbourhood were also addressed in the studies *Attitudes of Roma and Employers about Roma Integration into the Labour Market* (2007) and *Roma Situation at the Cross-Roads of Education and the Labour Market* (2008).

Poor housing conditions for Roma determine various issues, such as health problems or low school attendance. The European Committee for Social Rights (ECSR) in the European Social Charter Conclusions 2011 for Lithuania indicates that the Roma community faces a profound discrimination in access to housing. ECSR concludes that the situation in Lithuania is not in conformity with Article 31 of the Social Charter – the right to housing – and points out that the right to adequate housing is not effectively guaranteed. Furthermore, public authorities do not take sufficient measures to improve substandard housing<sup>66</sup>.

---

<sup>64</sup> Vilniaus miesto Socialinės paramos centras (2008) *Roma Living in Kirtimai Settlement on their Needs and Requests regarding Social Housing (Kirtimų gyvenvietėje gyvenančių romų apklausos apie socialinio būsto poreikius ir pageidavimus rezultatai)*. By order of the director of Social Affairs.

<sup>65</sup> Human Rights Monitoring Institute (2006). *The Problem of Vilnius Roma Housing: Legal Analysis*.

<sup>66</sup> Council of Europe (CoE), Committee of Social Rights (2012). *European Social Charter (revised). Conclusions 2011 (Lithuania)*, Strasbourg, Council of Europe, January 2012. Available at: [www.coe.int/t/dghl/monitoring/socialcharter/Conclusions/State/Lithuania2011\\_en.pdf](http://www.coe.int/t/dghl/monitoring/socialcharter/Conclusions/State/Lithuania2011_en.pdf). The hyperlink was accessed on 13 August 2012.

### **a. Quality and affordability of housing**

In general, the Lithuanian Roma live a sedentary life. According to the 2008 survey data, over half of the surveyed Roma (52%) indicated that they had lived for 20 years in their current city, town or village (*Annex 2, Table 3.1*). Over one-fourth of the respondents (27%) had lived in the same place for 11–20 years. Approximately one fifth (21%) of the surveyed Roma indicated that they had lived in their current place for around 10 years. The duration of living in the current living place or housing depends on age: middle-aged Roma were slightly less sedentary. In the age group of 26–40 years old, the majority (74%) had lived in their current place for less than 5 years, and this age group made up to 70% of those who had lived in the same place for 6–10 years. Correspondingly, 26–35 year old Roma changed their living place more often.<sup>67</sup>

The experts on Roma education surveyed in 2008<sup>68</sup> (53 experts working with Roma children – social pedagogues, representatives of school administration and teachers) maintain that most Roma live in their homes, both in nuclear families and together with several generations. The number of children varies (from 1–2, to 5–10) in the same region (town, city). An average Roma household consisted of 6–7 persons (*Annex 2, Table 3.2*), while the national average in 2007 was 2.4 persons.<sup>69</sup>

According to the 2001 Census data, the average useful floor space per Roma occupant was 10 square meters. The average floor space per occupant on the national average was 22.8 square meters.<sup>70</sup> There are no data on the number of persons per room, excluding the kitchen, corridor, bathroom and any rooms rented out.

### **b. Access to social or private housing**

In 2008, a significant increase in the number of complaints to the Office of Equal Opportunities Ombudsperson was recorded regarding Roma housing issues from different places in Lithuania (in 2004–2008 the Equal Opportunities Ombudsperson received 11 complaints, in 2008 – 5).<sup>71</sup> According to the Annual Report of the Lithuanian office of Equal Opportunities Ombudsperson, half (3) of all Roma complaints received in 2010 were regarding issues of access to social housing.<sup>72</sup>

Since 2007, the number of families applying for social housing has been on the rise in Lithuania. In 2007, 20,305 families (48,149 persons) were in queue for social housing and in 2011, 30,484 families (67,562 persons) were in queue for social housing. Only a small part of people who apply are able to rent social housing due to the shortage of available housing. In 2011, social housing was rented to 949 families (in 2008 – 821, in 2009 – 1191, and in 2010

---

<sup>67</sup> Centre of Ethnic Studies (2008). Romų padėties tyrimas: romai švietimo ir darbo rinkos sankirtoje (Roma Situation: Roma at the Cross-Roads of Education and the Labour Market). Available at: [www.ces.lt/wp-content/uploads/2008/06/STI\\_TMID\\_Romu-padeties-tyrimas-2008\\_ataskaita.pdf](http://www.ces.lt/wp-content/uploads/2008/06/STI_TMID_Romu-padeties-tyrimas-2008_ataskaita.pdf). The hyperlink was accessed on 25 July 2012.

<sup>68</sup> *Ibid.*

<sup>69</sup> *Ibid.*

<sup>70</sup> Kučinskaitė, E., K. (2005). Lithuanian Roma and Statistics. Report prepared for the Lithuanian Roma Community Union *Roma Mission*, Kaunas, Lithuania.

<sup>71</sup> Communication of the NFP-Lithuania to the Seimas Ombudsmen's Office of the Republic of Lithuania (*Seimo kontrolierių įstaiga*) (26 March 2009, 23 March 2009).

<sup>72</sup> The Office of Equal Opportunities Ombudsperson (2011). Annual report 2010 (*Lygių galimybių kontrolieriaus tarnybos 2010 m. ataskaita*), Vilnius. Available in Lithuanian at: [www.lygybe.lt/?pageid=7](http://www.lygybe.lt/?pageid=7). The hyperlink was accessed on 14 July 2012.

– 831).<sup>73</sup> There is no disaggregated information on Roma applying for or renting social housing.

### c. Location and access to public utilities and infrastructure

The 2001 Census reveals that Roma live with a significantly lower level of amenities. The presence of amenities in conventional dwellings of the total and Roma population consists of the following: 41% of Roma have running water (80% of total population), 27% – hot water (68% of total dwellings), 30% use bath/shower (73% of total population), 33% – flush toilet (69% of total population).<sup>74</sup>

The 2001 Census and *Housing Conditions of Roma and Travellers* indicates that houses in the Kirtimai settlement do not meet hygienic standards in terms of heating, outdoor toilets, water columns and limited public transportation. The Kirtimai settlement was equipped with basic amenities such as water, electricity and waste collection in 2001, with further and perhaps the latest developments in 2004.

In spite of the overall quality level of housing interiors, Roma dwellings are often located in disadvantaged places in terms of infrastructure and accessibility to public services, education and healthcare institutions.<sup>75</sup>

Although it is recognised that there are Roma in Lithuania who live in unsatisfactory housing<sup>76</sup> due to poverty, absence of conveniences, the need for renovation etc., there are no generalised and up to date statistics or data on the number and type of Roma housing. The main information concerns Roma living in the Kirtimai settlement in Vilnius, and no statistical information is available on Roma living in other regions of Lithuania.<sup>77</sup>

The assessment survey of Roma needs carried out by the Vilnius City Centre of Social Support in 2008 provides information on 86 houses (small one storey wooden buildings) in the Kirtimai settlement. According to the survey data, out of 86 houses, 22 did not have electricity. All houses were heated by solid fuel (mainly wood and wooden scrap). There were gas cylinders in 54 houses. Nearby 45 houses the following outdoor structures were built: 43 sheds for wood, four stables (barns), and 3 garages. There were gardens near three of the houses. There is one water pipeline, which is used by all the Kirtimai settlement inhabitants.<sup>78</sup> There is no local sewage, thus inhabitants of 53 houses use outdoor toilets. Paid shower and washing facilities were available at the Roma Community Centre.

During the survey, the interviewed Roma often voiced complaints regarding the improvement of their living conditions and environment, such as waste collection and regular transportation,

---

<sup>73</sup> Lithuanian Statistics. (2012). Available at: <http://www.stat.gov.lt/lt/pages/view/?id=1581>.

<sup>74</sup> Kučinskaitė, E., K. (2005). Lithuanian Roma and Statistics. Report prepared for the Lithuanian Roma Community Union *Roma Mission*, Kaunas, Lithuania.

<sup>75</sup> Centre of Ethnic Studies (2009). Thematic study Housing Conditions of Roma and Travellers.

<sup>76</sup> Open Society Institute / EU Accession Monitoring Programme (2002), Monitoring the EU Accession Process: Minority Protection, Volume I, pp. 365-418.

<sup>77</sup> Centre of Ethnic Studies (2009). Thematic study Housing Conditions of Roma and Travellers.

<sup>78</sup> Vilniaus miesto Socialinės paramos centras (2008) Roma Living in Kirtimai Settlement on their Needs and Requests regarding Social Housing (*Kirtimų gyvenvietėje gyvenančių romų apklausos apie socialinio būsto poreikius ir pageidavimus rezultatai*). By Order of the director of Social Affairs.

outdoor lighting, paving roads, renovation of houses, instalment of sewage and water supply, legalisation of houses, etc.<sup>79</sup>

#### **d. Security of tenure (including forced evictions and expulsions)**

According to the report *Lithuanian Roma and Statistics*, most of the Roma households are family households (a household comprising two or more persons who are in a marital or family relationship) – 77.6% of the Roma households include single-family and other types of family households. For the total population, the share of family type households equals 94%.<sup>80</sup>

The private housing sector accounts for about 97% of the total housing stock in Lithuania. In 2011, social housing accounted for only 2.8% of the total housing stock.<sup>81</sup>

In 2008, over one third of the surveyed Roma (38%) lived in housing that is private property of their family. The other large group of Roma (31%) lived in housing rented from the municipality (social housing). Nearly one fifth of the surveyed Roma (20%) lived in housing owned by other relatives (parents, other relatives). Only 8% of the surveyed Roma surveyed rent their housing from private owners (*Annex 2. Table 3.3*).<sup>82</sup>

According to the 2005 report *Lithuanian Roma and Statistics*, in 2001 the ratio between the number of households with self-owned dwelling to rented dwelling was 3:1 for Roma and 13:1 for the total population. The report indicated that a much greater proportion of Roma depended on public housing: the ratio between the number of private dwellings and the number of public/municipal dwellings was 4:1 for Roma and 50:1 for the total population.<sup>83</sup>

Although the number of Roma living in their own housing is not large, the analysis of secondary data reveals the following tendencies: women, respondents older than 40 years, and those living longer than 10 years in the same housing indicate living in their own (or family owned) housing. These groups live in comparatively smaller households (up to five persons) and are mainly comprised of women with one–three children.<sup>84</sup>

There is no generalised information on Roma applying for or renting social housing.

According to the Vilnius City Municipality, each year in between 2005 and 2008<sup>85</sup>, 40 Roma were enrolled on the list for social housing. The Municipality declares that 18 social housing rooms or flats have been rented to Roma persons since 2006. Although detailed demographic

---

<sup>79</sup> *Ibid.*

<sup>80</sup> Kučinskaitė, E., K. (2005). *Lithuanian Roma and Statistics*. Report prepared for the Lithuanian Roma Community Union *Roma Mission*, Kaunas, Lithuania.

<sup>81</sup> Housing Sector. *Lithuanian Statistics*. Available at:

<http://db1.stat.gov.lt/statbank/selectvarval/saveselections.asp?MainTable=M3100102&PLanguage=0&TableStyle=&Buttons=&PXSID=6364&IQY=&TC=&ST=ST&rvar0=&rvar1=&rvar2=&rvar3=&rvar4=&rvar5=&rvar6=&rvar7=&rvar8=&rvar9=&rvar10=&rvar11=&rvar12=&r>

<sup>82</sup> Centre of Ethnic Studies (2008). *Romų padėties tyrimas: romai švietimo ir darbo rinkos sankirtoje (Roma Situation: Roma at the Cross-Roads of Education and the Labour Market)*. Available at: [www.ces.lt/wp-content/uploads/2008/06/STI\\_TMID\\_Romu-padeties-tyrimas-2008\\_ataskaita.pdf](http://www.ces.lt/wp-content/uploads/2008/06/STI_TMID_Romu-padeties-tyrimas-2008_ataskaita.pdf). The hyperlink was accessed on 25 July 2012.

<sup>83</sup> Kučinskaitė, E., K. (2005). *Lithuanian Roma and Statistics*. Report prepared for the Lithuanian Roma Community Union *Roma Mission*, Kaunas, Lithuania.

<sup>84</sup> Centre of Ethnic Studies (2009). *Thematic study Housing Conditions of Roma and Travellers*.

<sup>85</sup> Communication of the NFP-Lithuania to the Vilnius City Municipality (10 October 2005, 05 October 2006, 17 September 2007, 23 September 2008, 12 March 2009).

data of applicants is not collected, most social flats were rented to Roma women (14 out of 18 flats).<sup>86</sup>

In 2007, only 1.7% of the surveyed Roma indicated that they had received social housing.<sup>87</sup>

There is no information on forced evictions and expulsions available in Lithuania. However, in this context, the demolition of houses in the Vilnius Kirtimai settlement by the Vilnius City Municipality at the end of 2004 and at the beginning of 2012 can be mentioned.

On February 13, 2012 three illegal houses were demolished by the Vilnius City Municipality in the Vilnius Kirtimai settlement. The Municipality based its decision on the claim that the buildings are illegal and have to be demolished under the legally set order. Seven more buildings are planned to be demolished after a pending court decision. During a media interview, the mayor of Vilnius stated that living and raising children to be good citizens of the society in the current conditions is impossible, thus the Vilnius Municipality is going to take actions ensuring that this place will not exist in the future.<sup>88</sup> No further information on the plans of the Vilnius City Municipality regarding the future of the settlement is available.

On December 2–3, 2004 following the decision of the Municipality, six buildings were demolished in Kirtimai. The Municipality based its decision on the claim that the buildings were illegal and that by demolishing the houses, drug dealing would suffer an important subsidy. The actions of the Municipality were acknowledged as breaching the law by the Seimas Ombudsmen's Office<sup>89</sup> and the Office of the Equal Opportunities Ombudsperson.<sup>90</sup>

On September 23, 2010, the Supreme Administrative Court of Lithuania (*Lietuvos vyriausiosios administracinės teismas*) issued a final decision on the court case concerning the demolition of buildings on 02.12.2004–03.12.2004 in a Roma settlement in Kirtimai, Vilnius. In 2008, the Supreme Administrative Court had already upheld the decision of the lower court that the damage to the property cannot be claimed. Therefore, only the assessment of non-pecuniary damages was processed. The court decided that the Vilnius City Municipality had exceeded its powers by directly participating in the demolition of the houses even though the duty to supervise and control unauthorized construction was not under its jurisdiction. Furthermore, the court noticed that the demolitions were started without following any legal procedures; the time limits set for the owners to legalise the unauthorised construction were not followed (the demolition started earlier), the actions were undertaken in the winter time, and the residents of the houses were not provided with any alternative housing. The court decided that the municipality is responsible for the non-pecuniary damages caused to the plaintiffs. The court had set different amounts of compensation for the plaintiffs according to their age and damages suffered; the compensation varied from 1,500 to 3,500 LTL per person (434–1,013 EUR). Higher sums would be paid to the children and elderly who lost their

---

<sup>86</sup> Centre of Ethnic Studies (2009). Thematic study Housing Conditions of Roma and Travellers.

<sup>87</sup> Centre of Ethnic Studies (2007). Romų ir darbdavių nuostatos dėl romų integracijos į darbo rinką (Attitudes of the Roma and the Employers toward Integration into the Labour Market).

<sup>88</sup> Delfi.lt (2012) 'Vilniaus tabore griaujami neteisėti statiniai', 13 February 2012. Available at: [www.delfi.lt/news/daily/lithuania/vilniaus-tabore-griaujami-neteisėti-statiniai.d?id=55424885](http://www.delfi.lt/news/daily/lithuania/vilniaus-tabore-griaujami-neteisėti-statiniai.d?id=55424885). The hyperlink accessed on 26 July 2012.

<sup>89</sup> Seimas Ombudsmen's Office of the Republic of Lithuania (2005). Pažyma No. 4D-2004/03-1760(1), issued on 11.08.2005. This was the second investigation regarding the same issue in this institution; the previous one was immediately after the demolitions (Seimas Ombudsmen's Office of the Republic of Lithuania (2004). Pažyma No. 4D-2004/03-1716, issued on 13.12.2004).

<sup>90</sup> The Equal Opportunities Ombudsperson issued a warning to the Mayor of Vilnius. The Office of the Equal Opportunities Ombudsperson / Pažyma No. (04)-SN-66, issued on 25 March 2005.



housing during the demolition. The decision of the Supreme Administrative Court is final and cannot be appealed.

The main housing issues in the Kirtimai settlement are related to the legal status of the dwellings. In 1956, the Soviet authorities issued an order that all Roma discontinue migration and live a sedentary life. Local authorities were obliged to create suitable conditions for settling down. As it is stated in the 2005 report, appropriate dwelling was not provided and people had to live in tents or in other types of poor, illegally constructed housing. Furthermore, after the restoration of Lithuania's independence, a Soviet document from 1956, which defined a privileged order for receiving a dwelling and included Roma, was annulled.<sup>91</sup>

Although Roma settlements have dissolved little by little with the provision of state dwellings for Roma families in other places of Lithuania<sup>92</sup>, many residents of the Kirtimai settlement live in illegal buildings to present day. According to the representative of Seimas Ombudsmen's Office of the Republic of Lithuania<sup>93</sup>, in the estate register at the state enterprise Centre of Registers (*Registru centras*), 134 buildings in the Kirtimai settlement are registered (43 are dwelling quarters and the rest – auxiliary, engineering).

The European Network Against Racism Shadow Report 2010–2011 recommends that housing problems and the legal status of the settlement should be solved by the Government and Vilnius City Municipality as soon as possible.<sup>94</sup>

#### **e. Residential segregation**

The largest residential concentration of Roma is situated in the Vilnius district of Kirtimai (an industrial area, close to the Vilnius international airport). The Roma in Vilnius' outskirts could be considered as ghettoised and discriminated against regarding housing opportunities.

Different sources provide different estimations of the number of inhabitants and houses in the Roma settlement in Kirtimai. The number fluctuates because new Roma persons move in and out of the settlement. In general, the number of inhabitants ranges from 350 to 500; the number of houses – from 78 to 99.<sup>95</sup>

According to the 2008 survey,<sup>96</sup> Roma live in Panevėžys city and Ukmergė town in less concentrated arrangements (around 13 households concentrated along one street). Around one fifth of the Roma in Klaipėda city live close to the sea port. During Soviet times, areas

---

<sup>91</sup> Kučinskaitė, E., K. (2005). Lithuanian Roma and Statistics. Report prepared for the Lithuanian Roma Community Union *Roma Mission*, Kaunas, Lithuania.

<sup>92</sup> *Ibid.*

<sup>93</sup> Communication of the NFP-Lithuania to the Seimas Ombudsmen's Office of the Republic of Lithuania (*Seimo kontrolierių įstaiga*) (26 March 2009, 23 March 2009).

<sup>94</sup> European Network Against Racism (ENAR) (2012). Shadow report 2010-2011, Racism and related discriminatory practices in Lithuania, March 2012, Brussels. Available at: [http://cms.horus.be/files/99935/MediaArchive/publications/shadow%20report%202010-11/ENAR%20Shadow%20Report\\_Lithuania\\_2011\\_FINAL\\_CONFIRMED.pdf](http://cms.horus.be/files/99935/MediaArchive/publications/shadow%20report%202010-11/ENAR%20Shadow%20Report_Lithuania_2011_FINAL_CONFIRMED.pdf). The hyperlink accessed on 26 July 2012.

<sup>95</sup> Kučinskaitė, E., K. (2005). Lithuanian Roma and Statistics. Report prepared for the Lithuanian Roma Community Union *Roma Mission*, Kaunas, Lithuania.

<sup>96</sup> Centre of Ethnic Studies (2008). Romų padėties tyrimas: romai švietimo ir darbo rinkos sankirtoje (Roma Situation: Roma at the Cross-Roads of Education and the Labour Market). Available at: [www.ces.lt/wp-content/uploads/2008/06/STI\\_TMID\\_Romu-padeties-tyrimas-2008\\_ataskaita.pdf](http://www.ces.lt/wp-content/uploads/2008/06/STI_TMID_Romu-padeties-tyrimas-2008_ataskaita.pdf). The hyperlink was accessed on 25 July 2012.

with concentrated Roma populations were Kėdainiai town (so called ‘garodokas’; a local version of a Russian word meaning ‘small town’), and in Zokniai (a district of Šiauliai city). People have since migrated away and these areas are now abandoned, however, no quantitative data is available.

According to the latest results of the annual public opinion poll analysing attitudes of Lithuania’s residents towards different ethnic and social groups, the Roma remain the most disliked ethnic group in Lithuania. The majority of the respondents (62.6%) indicated that they would not like to live in the same neighbourhood with Roma (64% in 2011 and 57% in 2010).<sup>97</sup>

The majority (64%) of respondents indicated that their opinion towards Roma has deteriorated over the last five years (61% in 2011 and 36% in 2010).<sup>98</sup>

There are no areas of regulated encampments in Lithuania. Also, temporary encampments are not a typical phenomenon in Lithuania.

No data are available on unregulated encampments and Roma living in Lithuania.

In 2008 and 2011,<sup>99</sup> several articles on Romanian Roma passing through or staying for a few days in Lithuania appeared in newspapers and were also reported on news internet portals. Lithuania is a transit country rather than a country of destination for EU Roma.

The media reported that for several years in a row, during the summer time, Romanian Roma stayed in the camping grounds of the Kaunas region or on the territory of the Trakai national park. According to the media sources, the interviewed Roma stated they were going to Moscow (Russian Federation), while some of them stated that they were on a tourist trip and stopped in Lithuania only for a while.<sup>100</sup>

#### **f. Experiences and perceptions of racial/ethnic discrimination**

In 2006–2009, the Office of Equal Opportunities Ombudsperson (OEOO) received no complaints regarding discrimination in housing on the grounds of ethnicity or religious belief.<sup>101</sup> In the Annual report of the OEOO in 2010, three cases concerning access to social housing of Roma people were reported.<sup>102</sup> According to the Shadow report of the European Network against Racism (ENAR), the lack of case-law and complaints at the Equal Opportunities Ombudsman institution or other institutions presupposes that access to housing

---

<sup>97</sup> Institute of Ethnic Studies (2012), Public opinion poll 2012 (supported by Research Council of Lithuania (*Lietuvos Mokslo Taryba*). Available at: [www.ces.lt/2012/06/visuomenes-nuostatos-2012/](http://www.ces.lt/2012/06/visuomenes-nuostatos-2012/). The hyperlink was accessed on 26 July 2012.

<sup>98</sup> *Ibid.*

<sup>99</sup> Delfi.lt (2008) ‘Rumunijos čigonai suka į Lietuvą’, 20 May 2008. Available at: [www.delfi.lt/news/daily/lithuania/article.php?id=17089475](http://www.delfi.lt/news/daily/lithuania/article.php?id=17089475). The hyperlink accessed on 26 July 2012.

<sup>100</sup> Delfi.lt (2008) ‘Rumunijos čigonai suka į Lietuvą’, 20 May 2008. Available at: [www.delfi.lt/news/daily/lithuania/article.php?id=17089475](http://www.delfi.lt/news/daily/lithuania/article.php?id=17089475). The hyperlink accessed on 26 July 2012.

<sup>101</sup> Communication of the NFP-Lithuania to the Vilnius City Municipality (10 October 2005, 05 October 2006, 17 September 2007, 23 September 2008, 12 March 2009).

<sup>102</sup> The Office of Equal Opportunities Ombudsperson (2011). Annual report 2010 (*Lygių galimybių kontrolieriaus tarnybos 2010 m. ataskaita*), Vilnius. Available in Lithuanian at: [www.lygybe.lt/?pageid=7](http://www.lygybe.lt/?pageid=7). The hyperlink was accessed on 14 July 2012.

is not an important issue for most ethnic minorities, with one exception – the Roma community.<sup>103</sup>

### Major projects or initiatives

No national or regional projects or initiatives targeting Roma housing and neighbourhood in Lithuania could be mentioned.

---

<sup>103</sup> European Network Against Racism (ENAR) (2008). Shadow report 2008, Racism in Lithuania, October 2009, Brussels.

## 5 Health

### a. Health status/limitations in daily activities/disability

Health issues and needs among Roma have not been studied on a national level since 2005. Thus it is difficult to evaluate the current situation concerning this issue.<sup>104</sup>

Statistical data on health published for the 2001 Census covered issues of fertility and disability; no other health data was disaggregated by ethnicity.<sup>105</sup> No statistical data is available on limitations in daily activities due to health problems among the Roma population.

The studies *Roma Situation at the Cross-Roads of Education and the Labour Market* carried out in 2008 and *Housing of Roma and Travellers* from 2009, show that poor dwelling conditions of Roma people cause a number of health problems. The Kirtimai settlement in Vilnius is in an industrial and possibly polluted area (the Vilnius International Airport and several factories operate close to it), where, according to the general city plan, no dwelling should be allowed.<sup>106</sup> Drug dealing in Kirtimai is also an important issue causing increased health risk for the Roma living there.

According to the 2001 Census, the percentage of disabled people was higher in all age groups among the Roma in comparison with the total population. The share of the Roma population aged 0-15 having a disability was 1.6 times greater compared with the total population of this age and was related mainly with the disability of boys.<sup>107</sup>

One of the latest studies of Roma children's health was carried out in 2006. A comparative analysis of Lithuanian and Latvian Roma children revealed that general morbidity among Roma children is similar to the national level. However, most of the surveyed Roma children (74.9%) assessed their health status as 'poor' or 'very poor' (this rate among Lithuanian pupils is 4.3%).<sup>108</sup>

According to a representative of the Roma community,<sup>109</sup> due to bad quality of water in the Kirtimai settlement, children often suffer from infectious diseases.

In February 2012, information about a case of jaundice in the Kirtimai settlement was published in the Lithuanian mass-media. Specialists of the Vilnius Public Health Centre notified that this rather rare, but dangerous infectious disease, could be a consequence of the dirty and untidy living conditions of the Roma. Experts warned that jaundice could spread not

---

<sup>104</sup> Roma and organizations working with Roma resolution on Roma integration strategy in Lithuania, 15 March 2012. Available at: [http://visiskirtingivisilygus.lt/wp-content/uploads/2012/03/Rom%C5%B3-integracijos-strategija\\_FINAL.pdf](http://visiskirtingivisilygus.lt/wp-content/uploads/2012/03/Rom%C5%B3-integracijos-strategija_FINAL.pdf). The hyperlink was accessed on 26 July 2012.

<sup>105</sup> Kučinskaitė, E., K. (2005). Lithuanian Roma and Statistics. Report prepared for the Lithuanian Roma Community Union *Roma Mission*, Kaunas, Lithuania.

<sup>106</sup> Centre of Ethnic Studies (2009). Thematic study *Housing Conditions of Roma and Travellers*.

<sup>107</sup> Kučinskaitė, E., K. (2005). Lithuanian Roma and Statistics. Report prepared for the Lithuanian Roma Community Union *Roma Mission*, Kaunas, Lithuania.

<sup>108</sup> Kanapeckienė, V., Valintėlienė, R., Kalibatas, J., Šepete, M., Šepete, T. (2006) Vilniaus ir Ventspilio romų vaikų socialinė aplinka, in: *Visuomenės sveikata*, No.2 (33), p.26-31.

<sup>109</sup> Interview of the NFP-Lithuania with the Roma NGO President (18 March 2009).

only within the Roma community, but outside it as well.<sup>110</sup> No further reports on cases of jaundice were published.

#### **b. Unmet needs in the area of health**

Roma in Lithuania often live in remote and disadvantaged areas in terms of infrastructure and accessibility to public services, including health care institutions. However, the results of the study *Roma Situation: Roma at the Cross-Roads of Education and the Labour Market* reveal strong Roma relations with health institutions. Responses to the question – how often do they approach health institutions – indicate that during last 12 months 40% of respondents approached a health institution for 1–3 times and 41.1% had contact with such institutions more than three times (*Annex 2. Table 4.1*).<sup>111</sup>

#### **c. Medical insurance coverage**

No statistical data are available on the medical insurance coverage of Roma.

In accordance with Article 17 of the Law on Health Insurance of the Republic of Lithuania,<sup>112</sup> insured individuals are persons who pay contributions in the legally set order or are persons covered by the compulsory health insurance. This means that all persons under age 18, persons who are employed or are unemployed, but registered in the labour exchange office, individuals who are retired and receive pension or relief compensations, and individuals who are recognized as disabled under the legally set order receive individual health care services financed from the Compulsory Health Insurance Fund (CHIF) budget. Such kinds of services include: primary outpatient, specialized outpatient and inpatient health care, first aid, nursing care, maintenance treatment, expensive tests and procedures, medical rehabilitation, sanatorium treatment and other services.

Expenditures related to the acquisition of reimbursable medicines, medical aids and orthopaedic equipment are also used to compensate insured individuals. Moreover, the CHIF budget finances health programmes that are important for the residents: student health care in schools, children's teeth (molar) sealing services, prevention of oncological diseases (uterus, breast, prostate, large intestine cancer, etc). These preventive programmes help to diagnose diseases at an early stage and increase the probability of recovery.<sup>113</sup>

#### **d. Circumstances around giving birth**

No data on circumstances around childbirth and other factors influencing access to maternal health care for Roma women are available.

---

<sup>110</sup> Diena.lt (2012) 'Tabore plinta gelta', 18 February 2012. Available at: [www.diena.lt/dienrastis/miestas/tabore-plinta-gelta-409063#axzz21nveECga](http://www.diena.lt/dienrastis/miestas/tabore-plinta-gelta-409063#axzz21nveECga). The hyperlink was accessed on 27 July 2012.

<sup>111</sup> Centre of Ethnic Studies (2008). Romų padėties tyrimas: romai švietimo ir darbo rinkos sankirtoje (Roma Situation: Roma at the Cross-Roads of Education and the Labour Market). Available at: [www.ces.lt/wp-content/uploads/2008/06/STI\\_TMID\\_Romu-padeties-tyrimas-2008\\_ataskaita.pdf](http://www.ces.lt/wp-content/uploads/2008/06/STI_TMID_Romu-padeties-tyrimas-2008_ataskaita.pdf). The hyperlink was accessed on 25 July 2012.

<sup>112</sup> Lithuania (1996), Law on the Health Insurance of the Republic of Lithuania (*LR Sveikatos draudimo įstatymas*), No 55-1287, 1996.

<sup>113</sup> National Health Insurance Fund under the Ministry of Health (2011). The National Health Insurance Fund, 08 February 2011. Available at: [www.vlk.lt/vlk/en/](http://www.vlk.lt/vlk/en/). The hyperlink was accessed on 28 August 2012.

In accordance with the Law on Health Insurance of the Republic of Lithuania,<sup>114</sup> in the legally set order, women who are on pregnancy and childbirth leave, including unemployed women, are covered by compulsory health insurance during the period of the pregnancy – 70 days preceding (28 weeks and more) and 56 days after childbirth.

The census data on fertility showed that the share of Roma women who gave birth was 73.4% compared to 75.9% among the total female population in Lithuania. On average, Roma women had their first child at a younger age when compared with the total population (*Annex 2. Table 4.2*). Roma women also give birth to more children than the Lithuanian average – the number of children born alive per female was 1.49 times higher in the case of Roma (2.13 for the total population and 3.17 for the Roma population).<sup>115</sup>

#### **e. Experiences and perceptions of racial/ethnic discrimination**

During the reported period, the Office of Equal Opportunities Ombudsperson has not received any complaints concerning experiences and perceptions of racial/ ethical discrimination concerning health issues.<sup>116</sup>

#### **Major projects or initiatives**

No national or regional projects and initiatives targeting the health situation of Roma in Lithuania could be mentioned.<sup>117</sup>

---

<sup>114</sup> Lithuania (1996), Law on the Health Insurance of the Republic of Lithuania (*LR Sveikatos draudimo įstatymas*), No 55-1287, 1996.

<sup>115</sup> Kučinskaitė, E., K. (2005). Lithuanian Roma and Statistics. Report prepared for the Lithuanian Roma Community Union *Roma Mission*, Kaunas, Lithuania.

<sup>116</sup> The Office of Equal Opportunities Ombudsperson (2011). Annual report 2010 (*Lygių galimybių kontrolieriaus tarnybos 2010 m. ataskaita*), Vilnius. Available in Lithuanian at: [www.lygybe.lt/?pageid=7](http://www.lygybe.lt/?pageid=7). The hyperlink was accessed on 14 July 2012.

<sup>117</sup> Communication of NFP-Lithuania with the Ministry of Health of the Republic of Lithuania (1 August 2012).

## 6 Poverty/Economic situation

The economic situation of Roma is described in a majority of the studies that have been carried out since 2006.

The study *Roma Situation: Roma at the Cross-Roads of Education and the Labour Market* (2008) observes the economic situation of Roma as the consequence of gained education and participation in the labour market. The research reveals that the majority of the surveyed Roma face high unemployment and also indicates poverty migration within the country.

The study *Roma's and Employers' Attitudes about Roma Integration into the Labour Market* (2007) evaluates the standards of living of Roma people in Lithuania.

Statistical information on the main sources of income for Roma is analysed in the report *Lithuanian Roma and Statistics* (2005) that presents and analyses data based on the 2001 Census.

All information provided below is based on these studies and reports.

### a. Households at-risk-of-poverty

No quantitative data are available on Roma persons living at the risk of poverty. The share of the total population facing the risk of poverty has been increasing in 2005–2010. In 2005, 20.5% of the total population in Lithuania faced the risk of poverty, while in 2010 this share increased to 31.8%. The risk of poverty is higher for the rural population (40.5% in 2010), children aged 0–17 (43.6% in 2010) and single parent households with one or more children (44.4% in 2010).<sup>118</sup> No statistical data are available for the period 2011–2012.<sup>119</sup>

### b. Income/ expenditure

In 2008, the majority (56.7%) of the surveyed Roma were unemployed, while 40.7% of the respondents indicated that they had a job or another kind of activity that generates income. The majority of such activities were in the informal economic sector and therefore precarious and often temporary.<sup>120</sup>

Most of the Roma respondents (70–90%) were not able to indicate the actual source of their means of subsistence. The results of the study showed that one of the main sources of income were social benefits from the Municipality. This was indicated by more than one third of the surveyed Roma (37.5%). In general, almost half (48.5%) of the participants of the research received social benefits. Parental support was also a significant means of subsistence (17.1%). Only 9% of Roma indicated that the main source of subsistence was income from work.<sup>121</sup>

---

<sup>118</sup> Statistics Lithuania. Available at [www.stat.gov.lt/en/pages/view/?id=2246](http://www.stat.gov.lt/en/pages/view/?id=2246).

<sup>119</sup> *Ibid.*

<sup>120</sup> Centre of Ethnic Studies (2008). Romų padėties tyrimas: romai švietimo ir darbo rinkos sankirtoje (Roma Situation: Roma at the Cross-Roads of Education and the Labour Market). Available at: [www.ces.lt/wp-content/uploads/2008/06/STI\\_TMID\\_Romu-padeties-tyrimas-2008\\_ataskaita.pdf](http://www.ces.lt/wp-content/uploads/2008/06/STI_TMID_Romu-padeties-tyrimas-2008_ataskaita.pdf). The hyperlink was accessed on 25 July 2012.

<sup>121</sup> Centre of Ethnic Studies (2008). Romų padėties tyrimas: romai švietimo ir darbo rinkos sankirtoje (Roma Situation: Roma at the Cross-Roads of Education and the Labour Market). Available at: [www.ces.lt/wp-](http://www.ces.lt/wp-)

In 2001, care of other persons/ institutions and benefits constituted the main source of livelihood for 66% of the Lithuanian Roma population, while it made up 38.7% for the total population.<sup>122</sup>

Economic activities (salary, income from individual business and/or farming) were indicated as the main source of income by 2.5% of the Roma population and 32.8% of the total population. Old age pension was indicated as a source of livelihood by 21.6% of the total population and 6.4% of the Roma.<sup>123</sup>

The majority of the surveyed Roma (91.6%) indicated food costs as their main expenditure item; other important expenditure items were clothes (53.7%), heating (51.3%), cigarettes (50.4%), pharmaceuticals (44.5%), transport (40.3%) and electricity fees (38.6%).<sup>124</sup>

### **c. Financial situation/social transfers/debts/borrowing**

In 2008, the majority (44.5%) of the interviewed Roma maintained that their standard of living deteriorated over the last year; one third of the surveyed Roma (32.8%) stated that their income did not change, and one fifth (19.3%) stated that their standard of living improved.<sup>125</sup>

The evaluation of the financial situation is related to the current employment situation, age, and gender of the respondents. Among the Roma who claimed that the financial situation of their families deteriorated, 60% were unemployed – the majority (84.2%) were aged 51-60 and more than half (51.4%) were women.<sup>126</sup>

Differences in the financial situation of the Roma can be noticed in different geographical areas of Lithuania. Roma living in the Kirtimai settlement claimed more often that their financial situation deteriorated over the last year; 60.5% of them agreed with this statement, while only 35.5% of the Roma living in other areas claimed the same. Furthermore, a quarter of the Roma living in other areas (26.3%) claimed that their financial situation improved, while only 7% of the Roma from the Kirtimai settlement claimed the same.<sup>127</sup>

During the 2008–2010 economic crisis, economic emigration from Lithuania has increased substantially. In 2006, 12,602 people declared emigration, while 21,970 declared emigration in 2009, and 83,157 people – in 2010. The increase in emigration figures was partially related to changes introduced to the public health care system requiring all permanent residents in Lithuania to pay monthly contributions, which prompted more emigrants to declare their emigration (including those who emigrated earlier).<sup>128</sup>

Emigration tendencies were noticed among the Roma as well. In 2008, more than half (52%) of the surveyed Roma indicated that both their family members and friends moved abroad and that the majority were in gainful employment. The surveyed Roma have experienced

---

content/uploads/2008/06/STI\_TMID\_Romu-padeties-tyrimas-2008\_ataskaita.pdf. The hyperlink was accessed on 25 July 2012.

<sup>122</sup> Kučinskaitė, E., K. (2005). Lithuanian Roma and Statistics. Report prepared for the Lithuanian Roma Community Union *Roma Mission*, Kaunas, Lithuania

<sup>123</sup> *Ibid.*

<sup>124</sup> Centre of Ethnic Studies (2007). Romų ir darbdavių nuostatos dėl romų integracijos į darbo rinką (Attitudes of the Roma and the Employers toward Integration into the Labour Market).

<sup>125</sup> *Ibid.*

<sup>126</sup> *Ibid.*

<sup>127</sup> *Ibid.*

<sup>128</sup> Top 10 Destinations. (2010). Available at:<http://123.emn.lt/en/emigration/top-10-destinations>.



both short and long term emigration, including employment abroad (*Annex 2. Table 5.1*). The average period of living abroad was approximately 6 years (*Annex 2. Table 5.2*).<sup>129</sup>

Roma migration rarely overcomes the problems of poverty and social exclusion. Along with emigration abroad, the study *Roma Situation: Roma at the Cross-Roads of Education and the Labour Market*, revealed cases of poverty migration within the country, i.e. when Roma moved to rural areas or smaller towns where cheaper housing was available. According to the results of the study, this process indicates a deepening social marginalisation of Roma that started during the economic growth of the country.<sup>130</sup>

In 2007, the majority of the surveyed Roma (56.3%) did not have any debts, while more than one third (38.7%) did. Most of the respondents (21.8%) were indebted to other persons. It was noticed that most of the debts were related to public utility fees: 20.2% were indebted for electricity, 11.8% for various public utilities of housing, and 4.2% for water. A small part of the surveyed Roma (1.2%) was indebted to the bank.<sup>131</sup>

According to the 2007 study, 60.9% of Roma women, 67.4% of Roma living in other Roma settlements apart from the Kirtimai settlement and 58.7% of the employed respondents indicated that they had debts. The majority of those in debt were 21–40 years old.<sup>132</sup>

#### **d. Malnutrition/hunger**

No data on malnutrition and hunger are available.

#### **e. Material deprivation and/or other non-income poverty indicators**

Although there is no data available on malnutrition and hunger of Lithuanian Roma, in 2007 the majority of the surveyed Roma (43.7%) indicated that during the last 12 months they had received food support.<sup>133</sup>

In 2007, a quarter of the respondents mentioned that they had received allowances for raising children (25.2%) and other kind of social support (22.7%). In addition to financial support, Roma respondents indicated that during the last 12 months they had received support in clothes (18.5%), school materials for children (15.1%), firewood and other kinds of fuel for heating (3.4%), and social housing (1.7%) (*Annex 2. Table 5.3*).<sup>134</sup>

The respondents of the study *Roma Situation: Roma at the Cross-Roads of Education and the Labour Market* were asked what kind of support they need for their school-age children. Most needs were related to the lack of finances; almost a quarter of the surveyed Roma (24.3%) indicated the necessity of financial means to buy school supplies, clothes and to fulfil other daily needs of their children; 19.1% of the surveyed Roma indicated that the most

---

<sup>129</sup> Centre of Ethnic Studies (2008). Romų padėties tyrimas: romai švietimo ir darbo rinkos sankirtoje (Roma Situation: Roma at the Cross-Roads of Education and the Labour Market). Available at: [www.ces.lt/wp-content/uploads/2008/06/STI\\_TMID\\_Romu-padeties-tyrimas-2008\\_ataskaita.pdf](http://www.ces.lt/wp-content/uploads/2008/06/STI_TMID_Romu-padeties-tyrimas-2008_ataskaita.pdf). The hyperlink was accessed on 25 July 2012.

<sup>130</sup> *Ibid.*

<sup>131</sup> Centre of Ethnic Studies (2007). Romų ir darbdavių nuostatos dėl romų integracijos į darbo rinką (Attitudes of the Roma and the Employers toward Integration into the Labour Market).

<sup>132</sup> *Ibid.*

<sup>133</sup> *Ibid.*

<sup>134</sup> Centre of Ethnic Studies (2007). Romų ir darbdavių nuostatos dėl romų integracijos į darbo rinką (Attitudes of the Roma and the Employers toward Integration into the Labour Market).

reasonable support would be school supplies, such as handbooks, exercise books, sports apparel, etc.<sup>135</sup>

In 2007, the majority of the respondents who indicated that they have received social support during the last 12 months were women (70%), Roma living in other Roma settlements apart from Kirtimai (60%), and those who were not involved in income generating work activities (54%).<sup>136</sup>

### Major projects or initiatives

No national or regional projects or initiatives that would include actions aimed at poverty reduction for Roma people could be mentioned.

---

<sup>135</sup> Centre of Ethnic Studies (2008). Romų padėties tyrimas: romai švietimo ir darbo rinkos sankirtoje (Roma Situation: Roma at the Cross-Roads of Education and the Labour Market). Available at: [www.ces.lt/wp-content/uploads/2008/06/STI\\_TMID\\_Romu-padeties-tyrimas-2008\\_ataskaita.pdf](http://www.ces.lt/wp-content/uploads/2008/06/STI_TMID_Romu-padeties-tyrimas-2008_ataskaita.pdf). The hyperlink was accessed on 25 July 2012.

<sup>136</sup> Centre of Ethnic Studies (2007). Romų ir darbdavių nuostatos dėl romų integracijos į darbo rinką (Attitudes of the Roma and the Employers toward Integration into the Labour Market).

## 7 Active citizenship/Rights awareness

### a. Awareness of the existence of representative Roma organisations, other civil society organisations, anti-discrimination legislation and equality bodies

Active citizenship of Roma people and awareness of their rights is one of the least elaborated fields concerning the Lithuanian Roma. There are neither qualitative, nor quantitative studies that would reveal achievements and problems of this issue.

According to information provided by the Ministry of Culture and the director of the Roma Community Centre (*Romų visuomenės centras*)<sup>137</sup>, currently only four Roma non-governmental organisations (NGOs) are actively working, all of them based in the Vilnius region: *Lietuvos čigonų bendrija “Čigonų laužas”* (the Lithuanian Gypsy Association “Gypsy Fire”, Vilnius), *Lietuvos čigonų bendrija “Čigonų laužas”, Šalčininkų rajono skyrius* (Šalčininkai regional branch of the Lithuanian Gypsy Association “Gypsy Fire”), *Vilniaus čigonų bendrija* (the Vilnius Gypsy Community), and a newly established NGO, *Romų integracijos namai* (the Roma Integration House, Vilnius).

Regarding the anti-discrimination legislations of Roma, in the period of 2006–2012 two national programmes for Roma integration were approved. The 2008–2010 *Programme for Roma Integration into Lithuanian society* aimed to protect Roma identity, to decrease social exclusion and ensure their integration into Lithuanian society, as well as to promote confidence in Roma people.<sup>138</sup> On March 2012, the 2012–2014 plan for Roma integration into Lithuanian society was approved by the Ministry of Culture of the Republic of Lithuania. This plan is a part of the European Commission communication on National Roma integration strategies up to 2020.

Complaints on the grounds of race and ethnicity are investigated by the Office of Equal Opportunities Ombudsperson (OEOO). According to the data of the OEOO Annual Report, complaints of Roma discrimination are usually received from representatives of NGOs during the period of various project implementations.<sup>139</sup>

### b. Participation in elections and political representation

No data are available on participation of Roma in elections and political representation.

Kasatkina and Beresnevičiūtė (2006) note that the Lithuanian Seimas (Parliament) has always included representatives of national minorities, yet ethnic minorities are not represented proportionally.<sup>140</sup> The authors argue that representatives of ethnic minority

---

<sup>137</sup> Communication of NFP-Lithuania with the Ministry of Culture (12 April 2012) and the director of the Roma Community Centre (12 April 2012).

<sup>138</sup> Lithuania, Government of the Republic of Lithuania (*Lietuvos Respublikos Vyriausybė*) (2008) 2008-2010 Programme for Roma Integration into Lithuanian Society (*Romų integracijos į Lietuvos visuomenę 2008-2010 metų programa*), 26 March 2008.

<sup>139</sup> The Office of Equal Opportunities Ombudsperson (2011). Annual report 2010 (*Lygių galimybių kontrolieriaus tarnybos 2010 m. ataskaita*), Vilnius. Available in Lithuanian at: [www.lygybe.lt/?pageid=7](http://www.lygybe.lt/?pageid=7). The hyperlink was accessed on 14 July 2012.

<sup>140</sup> The Office of Equal Opportunities Ombudsperson (2011). Annual report 2010 (*Lygių galimybių kontrolieriaus tarnybos 2010 m. ataskaita*), Vilnius. Available in Lithuanian at: [www.lygybe.lt/?pageid=7](http://www.lygybe.lt/?pageid=7). The hyperlink was accessed on 14 July 2012.

groups rarely hold important posts in the main parties.<sup>141</sup> No person of Roma nationality has been elected to the Seimas in 1992–2012.

No Roma representative was elected to a Lithuanian Municipality Council in 2011.<sup>142</sup>

#### **c. Participation and representation in non-governmental organisations**

Some civil society organizations have implemented various projects and initiatives that actively involved Roma representatives as well. For instance, a project *Turn Back to Roma: Innovative measures of Roma Participation in the Labour Market* which has been implemented by United Nation Development Programme in Lithuania (UNDP) in partnership with the Roma Community Centre, an NGO “SOPA,” and the Vilnius Municipality Social Assistance Centre, employed 17 people since 2010, including some Roma people employed as social work assistants.

#### **d. Awareness and use of complaints procedures**

Discrimination based on race or ethnicity is the third most common ground of complaint after social status and sex received by the Office of Equal Opportunities Ombudsperson. According to the data provided in the Annual Report of the OEEO, a gradual increase in complaints was recorded and was connected to active actions of the Roma people and NGOs. However, in 2009, the Office of Equal Opportunities Ombudsperson received notably less complaints on the grounds of race or ethnicity. Supposedly, the reason for this is the economic crisis and economic slowdown that results in the emigration of citizens.<sup>143</sup>

#### **e. Experiences and perceptions of racial/ethnic discrimination**

According to the Office of Equal Opportunities Ombudsperson Annual report 2010 (2011), NGOs provide annually complaints concerning Roma discrimination in the framework of various projects. In 2006 there were no Roma complaints of discrimination on the grounds of nationality, race and ethnicity. In 2007 there were 4 complaints (17% of all complaints of discrimination on the grounds of nationality, race and ethnicity), in 2008 – 3 (11% of all complaints), in 2009 – 2 (10% of all complaints) and in 2010 – 6 (25% of all complaints).

According to the latest data of the Office of Equal Opportunities Ombudsperson Annual report 2010, 3 complaints were related to access to housing (the fact of discrimination was not confirmed in any of the cases). Two complaints concerned personal identification documents, however discrimination was not confirmed in these cases either.

### Major projects or initiatives

No national or regional projects or initiatives that would include actions aiming at raising awareness to encourage civil/voting registration could be mentioned.

---

<sup>141</sup> *Ibid.*

<sup>142</sup> The Central Elections Commission of the Republic of Lithuania (2011). Elections to Municipal Councils. Composition of Municipal Councils by gender, average age and nationality. Available at: [www.vrk.lt/2011\\_savivaldybiu\\_tarybu\\_rinkimai/output\\_en/rinkimu\\_diena/stat2.html](http://www.vrk.lt/2011_savivaldybiu_tarybu_rinkimai/output_en/rinkimu_diena/stat2.html).

<sup>143</sup> The Office of Equal Opportunities Ombudsperson (2011). Annual report 2010 (*Lygių galimybių kontrolieriaus tarnybos 2010 m. ataskaita*), Vilnius. Available in Lithuanian at: [www.lygybe.lt/?pageid=7](http://www.lygybe.lt/?pageid=7). The hyperlink was accessed on 14 July 2012.

## Annexes

### 1. Bibliography

15min.lt (2011) 'Kauno marių pakrantę okupavo romai', 17 June 2011. Available at: [www.15min.lt/naujiena/miestas/kaunas/kauno-mariu-pakrante-okupavo-romai-42-156294](http://www.15min.lt/naujiena/miestas/kaunas/kauno-mariu-pakrante-okupavo-romai-42-156294). The hyperlink was accessed on 26 July 2012.

Centre of Ethnic Studies (2009). Thematic study Housing Conditions of Roma and Travellers.

Centre of Ethnic Studies (2008). Romų padėties tyrimas: romai švietimo ir darbo rinkos sankirtoje (Roma Situation: Roma at the Cross-Roads of Education and the Labour Market). Available at: [www.ces.lt/wp-content/uploads/2008/06/STI\\_TMID\\_Romu-padeties-tyrimas-2008\\_ataskaita.pdf](http://www.ces.lt/wp-content/uploads/2008/06/STI_TMID_Romu-padeties-tyrimas-2008_ataskaita.pdf). The hyperlink was accessed on 25 July 2012.

Centre of Ethnic Studies (2007). Romų ir darbdavių nuostatos dėl romų integracijos į darbo rinką (Attitudes of the Roma and the Employers toward Integration into the Labour Market).

Communication of NFP-Lithuania with the Ministry of Health of the Republic of Lithuania (1 August 2012).

Communication of NFP-Lithuania with Vilnius Local Labour Exchange Office (*Vilniaus teritorinė darbo birža*) (29 July 2012, 27 September 2011).

Communication of NFP-Lithuania with project *Help Me to Fit In: First Steps at School* (org. *Padėk pritapti: pirmi žingsniai mokykloje*) coordinators (11 July 2012).

Communication of NFP-Lithuania with the Ministry of Culture (12 April 2012) and the director of the Roma Community Centre (12 April 2012).

Communication of NFP-Lithuania with the Ministry of Culture (2 April 2012).

Communication of NFP-Lithuania with Statistics Lithuania (*Lietuvos statistikos departamentas*) (29 March 2012).

Communication of the NFP-Lithuania to the Seimas Ombudsmen's Office of the Republic of Lithuania (*Seimo kontrolierių įstaiga*) (26 March 2009, 23 March 2009).

Communication of the NFP-Lithuania to the Office of the Equal Opportunities Ombudsperson (*Lygių galimybių kontrolierius tarnyba*) (12 January 2007, 06 September 2007, 15 September 2008; 19 February 2009).

Communication of the NFP-Lithuania to the Vilnius City Municipality (10 October 2005, 05 October 2006, 17 September 2007, 23 September 2008, 12 March 2009).

- Council of Europe (CoE), Committee of Social Rights (2012). *European Social Charter (revised). Conclusions 2011 (Lithuania)*, Strasbourg, Council of Europe, January 2012. Available at: [www.coe.int/t/dghl/monitoring/socialcharter/Conclusions/State/Lithuania2011\\_en.pdf](http://www.coe.int/t/dghl/monitoring/socialcharter/Conclusions/State/Lithuania2011_en.pdf). The hyperlink was accessed on 13 August 2012.
- Delfi.lt (2012) 'Vilniaus tabore griaujami neteisėti statiniai', 13 February 2012. Available at: [www.delfi.lt/news/daily/lithuania/vilniaus-tabore-griaujami-neteisėti-statiniai.d?id=55424885](http://www.delfi.lt/news/daily/lithuania/vilniaus-tabore-griaujami-neteisėti-statiniai.d?id=55424885). The hyperlink accessed on 26 July 2012.
- Delfi.lt (2011) 'Dėl romų vaikų padėties 3 Č klasėje pradėtas tyrimas', 18 March 2011. Available at: [www.delfi.lt/news/daily/education/del-romu-vaiku-padeties-3c-klaseje-pradetas-tyrimas.d?id=43289319](http://www.delfi.lt/news/daily/education/del-romu-vaiku-padeties-3c-klaseje-pradetas-tyrimas.d?id=43289319). The hyperlink was accessed on 25 July 2012.
- Delfi.lt (2008) 'Rumunijos čigonai suka į Lietuvą', 20 May 2008. Available at: [www.delfi.lt/news/daily/lithuania/article.php?id=17089475](http://www.delfi.lt/news/daily/lithuania/article.php?id=17089475). The hyperlink accessed on 26 July 2012.
- Department of National Minorities and Lithuanians living Abroad to the Government of Lithuania (2008), Programme for the integration of Roma into Lithuanian society 2008-2010 (*Romų integracijos į visuomenę 2008-2010 m. programa*), available at: <http://tar.tic.lt/Default.aspx?id=2&item=results&aktoid=4A7620A0-848C-4E2F-95FC-87091E8DF0CC>. The hyperlink accessed on 27 July.
- Diena.lt (2012) 'Tabore plinta gelta', 18 February 2012. Available at: [www.diena.lt/dienrastis/miestas/tabore-plinta-gelta-409063#axzz21nveECga](http://www.diena.lt/dienrastis/miestas/tabore-plinta-gelta-409063#axzz21nveECga). The hyperlink was accessed on 27 July 2012.
- Human Rights Monitoring Institute (2006). *The Problem of Vilnius Roma Housing: Legal Analysis*.
- Europe Information Centre (2012) Round table discussion 'Roma in the European Union and Lithuania', 11 July 2012.
- European Network Against Racism (ENAR) (2012). Shadow report 2010-2011, Racism and related discriminatory practices in Lithuania, March 2012, Brussels. Available at: [http://cms.horus.be/files/99935/MediaArchive/publications/shadow%20report%202010-11/ENAR%20Shadow%20Report\\_Lithuania\\_2011\\_FINAL\\_CONFIRMED.pdf](http://cms.horus.be/files/99935/MediaArchive/publications/shadow%20report%202010-11/ENAR%20Shadow%20Report_Lithuania_2011_FINAL_CONFIRMED.pdf). The hyperlink accessed on 26 July 2012.
- European Network Against Racism (ENAR) (2008). Shadow report 2008, Racism in Lithuania, October 2009, Brussels.
- European Network of Legal Experts in the Non-discrimination field (2008). Report on measures to combat discrimination, Country report 2008, Lithuania. Available at: [www.non-discrimination.net/en/law/NationalLegislation/country-reportsEN.jsp](http://www.non-discrimination.net/en/law/NationalLegislation/country-reportsEN.jsp). The hyperlink was accessed on 25 July 2012.
- Głowacka-Grajper, M. (2003) *Romowie na Litwie: nowe problemy w nowym państwie*. In: E. Nowicka (red.), *Romowie o sobie i dla siebie*, Warszawa: IS UW 2003, pp. 61–103.

- Institute of Ethnic Studies (2012), Public opinion poll 2012 (supported by Research Council of Lithuania (*Lietuvos Mokslo Taryba*). Available at: [www.ces.lt/2012/06/visuomenes-nuostatos-2012/](http://www.ces.lt/2012/06/visuomenes-nuostatos-2012/). The hyperlink was accessed on 26 July 2012.
- Institute for Labour and Social Research (2001), Romų gyvenančių Vilniaus miesto taboruose, sociologinis tyrimas. Research report.
- Interview of the NFP-Lithuania with the Roma NGO President (18 March 2009).
- Kanapeckienė, V., Valintėlienė, R., Kalibatas, J., Šepete, M., Šepete, T. (2006) Vilniaus ir Ventspilio romų vaikų socialinė aplinka, in: *Visuomenės sveikata*, No.2 (33), p.26-31.
- Kasatkina N., Beresnevičiūtė, V. (2006) 'Ethnic Structure, Inequality and Governance of the Public Sector in Lithuania'. Available at: [www.ces.lt/wp-content/uploads/2012/03/EtSt\\_Kasatkina\\_Beresneviciute\\_2010.pdf](http://www.ces.lt/wp-content/uploads/2012/03/EtSt_Kasatkina_Beresneviciute_2010.pdf). The hyperlink was accessed on 15 August 2012.
- Kasdien.lt (2011) 'Čigonai Č klasėje nesimokys', 5 May 2011. Available at: [www.kasdien.lt/Pradzia/Naujienos/Lietuvoje/Cigonai-C-klaseje-nesimokys](http://www.kasdien.lt/Pradzia/Naujienos/Lietuvoje/Cigonai-C-klaseje-nesimokys). The hyperlink was accessed on 25 July 2012.
- Kučinskaitė, E., K. (2005). Lithuanian Roma and Statistics. Report prepared for the Lithuanian Roma Community Union *Roma Mission*, Kaunas, Lithuania.
- Lithuania, Government of the Republic of Lithuania (*Lietuvos Respublikos Vyriausybė*) (2008) 2008-2010 Programme for Roma Integration into Lithuanian Society (*Romų integracijos į Lietuvos visuomenę 2008-2010 metų programa*), 26 March 2008.
- Lithuania (2012), Due to compulsory pre-school and pre-primary education setting and appointment approval (*Dėl privalomo ikimokyklinio ir priešmokyklinio ugdymo nustatymo ir skyrimo tvarkos aprašo patvirtinimo*), No V-735/A1-208, 26 April 2012.
- Lithuania (1996), Law on the Health Insurance of the Republic of Lithuania (*LR Sveikatos draudimo įstatymas*), No 55-1287, 1996.
- Lithuania (1994), Law on social insurance pensions (*LR Valstybinio socialinio draudimo pensijų įstatymas*), No 1-549, 18 July 1994, last amendment 01 January 2010.
- National Health Insurance Fund under the Ministry of Health (2011). The National Health Insurance Fund, 08 February 2011. Available at: [www.vlk.lt/vlk/en/](http://www.vlk.lt/vlk/en/). The hyperlink was accessed on 28 August 2012.
- Open Society Institute / EU Accession Monitoring Programme (2002), *Monitoring the EU Accession Process: Minority Protection*, Volume I, pp. 365-418.
- Roma and organizations working with Roma resolution on Roma integration strategy in Lithuania, 15 March 2012. Available at: [http://visiskirtingivisilygus.lt/wp-content/uploads/2012/03/Rom%C5%B3-integracijos-strategija\\_FINAL.pdf](http://visiskirtingivisilygus.lt/wp-content/uploads/2012/03/Rom%C5%B3-integracijos-strategija_FINAL.pdf). The hyperlink was accessed on 26 July 2012.

- Seimas Ombudsmen's Office of the Republic of Lithuania (2004). Pažyma No. 4D-2004/03-1716, issued on 13.12.2004.
- Seimas Ombudsmen's Office of the Republic of Lithuania (2005). Pažyma No. 4D-2004/03-1760(1), issued on 11.08.2005.
- Statistics Lithuania (2002). Population and household census in Lithuania. Population according to gender, age, ethnicity and religion (*Lietuvos gyventojų ir būstų surašymas 2001. Gyventojai pagal lytį, amžių, tautybę ir tikybą*), Vilnius: Statistikos departamentas.
- Statistics Lithuania (2011). *Statistical Yearbook of Lithuania 2011*. Available at: [www.stat.gov.lt/uploads/metraštis/1\\_LSM\\_2011\\_Lt.pdf?PHPSESSID](http://www.stat.gov.lt/uploads/metraštis/1_LSM_2011_Lt.pdf?PHPSESSID). The hyperlink was accessed on 16 April 2012.
- Statistics Lithuania (2012) 2011 Population and Housing Census. Available at: [www.stat.gov.lt/en/pages/view/?id=3408](http://www.stat.gov.lt/en/pages/view/?id=3408). The hyperlink was accessed on 01 October 2012.
- The Central Elections Commission of the Republic of Lithuania (2011). Elections to Municipal Councils. Composition of Municipal Councils by gender, average age and nationality. Available at: [www.vrk.lt/2011\\_savivaldybiu\\_tarybu\\_rinkimai/output\\_en/rinkimu\\_diena/stat2.html](http://www.vrk.lt/2011_savivaldybiu_tarybu_rinkimai/output_en/rinkimu_diena/stat2.html).
- The Office of Equal Opportunities Ombudsperson (2011). Annual report 2010 (*Lygių galimybių kontrolieriaus tarnybos 2010 m. ataskaita*), Vilnius. Available in Lithuanian at: [www.lygybe.lt/?pageid=7](http://www.lygybe.lt/?pageid=7). The hyperlink was accessed on 14 July 2012.
- Vilniaus miesto Socialinės paramos centras (2008) Roma Living in Kirtimai Settlement on their Needs and Requests regarding Social Housing (*Kirtimų gyvenvietėje gyvenančių romų apklausos apie socialinio būsto poreikius ir pageidavimus rezultatai*). By order of the director of Social Affairs.



## 2. Statistical tables

Source: Centre of Ethnic Studies (2008). The research sample was 231 Lithuanian Roma living in different geographical sites of Lithuania. The data was collected in November–December 2008.

### 1 Education

**Table 1.1.** Roma distribution by the age of school start (N=231, survey respondents)

Age	N	%
6-7 years old	124	53,7
8-9 years old	38	16,5
10 years old and elder	20	8,7
Did not indicate	49	21,2
Total	231	100,0

**Table 1.2.** How old was your child, when he/she started school? (N=273, children of survey respondents)

Age	N	%
5 years old	3	1,1
6 years old	44	16,1
7 years old	167	61,2
8 years old	27	9,9
9 years old	17	6,2
10 years old	10	3,7
11 years old	2	0,7
Did not indicate	3	1,1
Total	273	100,0

**Table 1.3** Roma distribution by the number of finished grades (N=231, %)

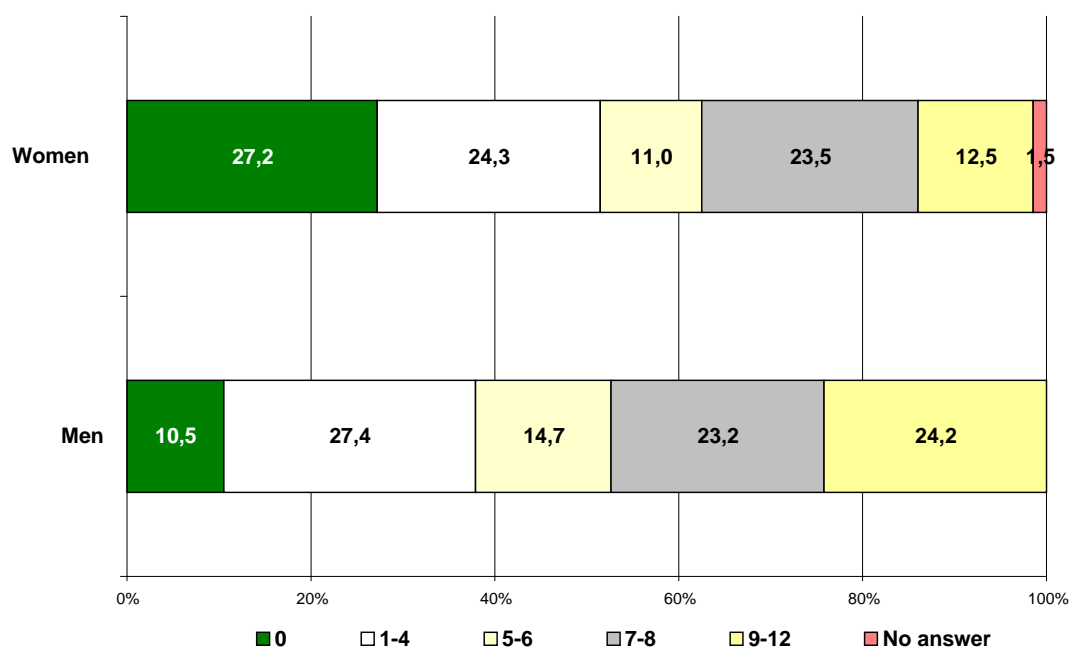
Finished grades	N	%
0 grades/ did not attend	47	20,3
1-4 grades	59	25,5
5-6 grades	29	12,6
7-8 grades	54	23,4
9 grades and more	40	17,3
No answer	2	0,9
Total	231	100,0

**Table 1.4** Roma distribution by education level (N=231, %)

	N	%
0 grades (or did not attend school)	47	20,3
Unfinished primary school	40	17,3
Primary school	65	28,1
Compulsory basic education (10 grades)	51	22,1
Secondary school	18	7,8
Vocational school	3	1,3
Unfinished university/college	3	1,3
Other	2	0,9
Did not indicate	2	0,9

Total	231	100,0
-------	-----	-------

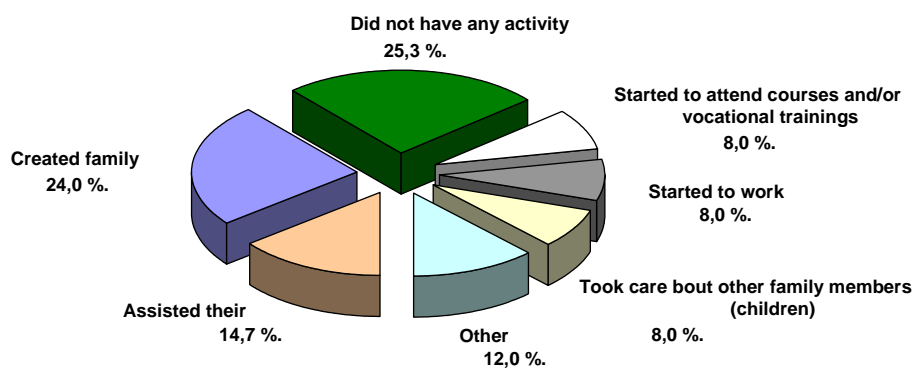
**Table 1.5 Roma distribution by the gender: completed grades (%)**



**Table 1.6** How old were you, when you finished school (quitted school, graduated secondary or vocational school, etc.)? (N=231, %)

Age	N	%
8-10 years old	17	7,4
11-13 years old	40	17,3
14-16 years old	79	34,2
17 years old and elder	25	10,8
Did not indicate	70	30,3
Total	231	100,0

**Table 1.7** After quitting school what kind of activities did children do? Why did they quit school? (N=75, number of children, %)



## 2 Employment

**Table 2.1.** What is your main job or activity from which you receive income? (N=231, %)

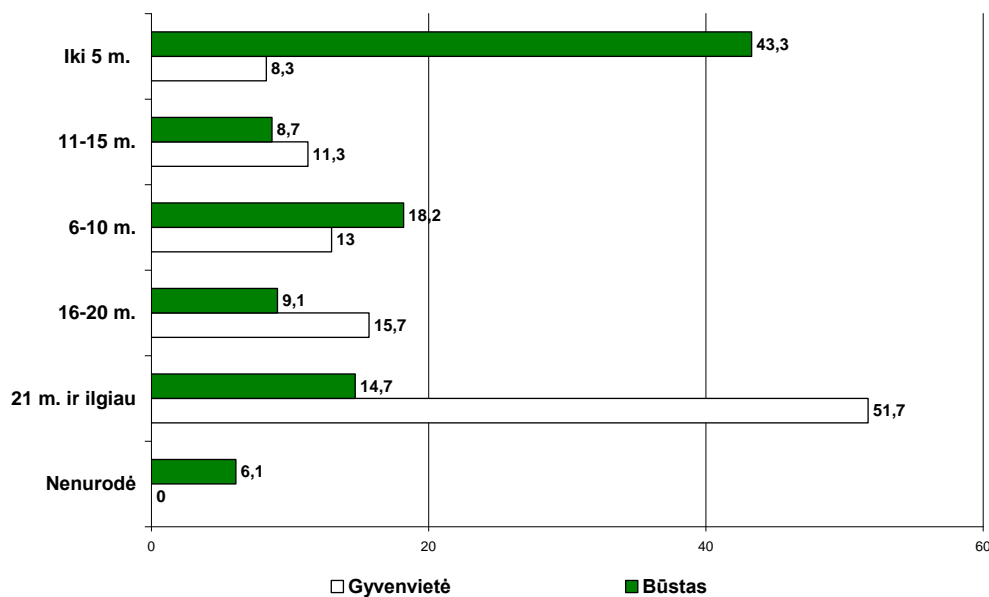
	N	%
Do not have any job	131	56,7
Informal individual activities	24	10,4
Work with the contract	20	8,7
Informal marketing, trading in the market	16	6,9
Other	16	6,9
Hired without work contract	14	6,1
Work with the patent	4	1,7
Did not indicate	6	2,6
Total	231	100,0

**Table 2.2.** How old were you when you start to work a job from which you receive income? (N=231, %)

Age	N	%
Under 16 years old	62	26,8
17-18 years old	31	13,4
19-25 years old	41	17,7
26-30 years old	10	4,3
31 years old and elder	6	2,6
Did not indicate (including the ones who never worker)	81	35,1
Total	231	100,0

### 3 Housing and neighbourhood

**Table 3.1** Comparison of duration of living in a settlement (org. gyvenvietė) and a housing (org. būstas) (N=107, %)



**Table 3.2** How many persons live with you (including yourself) in your household (house, flat)? (N=107, %)

Size of the household	N	%
1-3 persons	12	11,2
4-5 persons	35	32,7
6-7 persons	29	27,1
8 and more	31	29,0
	107	100,0

**Table 3.3** Whose property is the dwelling (house/flat) you live in? (N=107, %)

	N	%
A property of my family (spouse, partner)	41	38,3
A property of my parents	8	7,5
Property of other relatives	12	11,2
Renting from private owners	8	7,5
Renting from Municipality	33	30,8
Other	5	4,7
Total	107	100,0

## 4 Health

**Table 4.1.** How often have you contacted these institutions or their employees? (N=89, %)

	Never once	Once	2-3 times	More than 2-3 times	Not indicated
Mayor of the city	78,4	4,5	6,8	10,2	0
Municipality (staff of the Municipality)	43,5	20,7	16,3	19,6	0
Parish	54,5	15,9	10,2	19,3	0
Healthcare (medicine) institution	18,9	16,8	23,2	41,1	0
Institution of social services	30,1	21,5	10,8	33,3	4,3
Directly to social worker	52,2	13,3	12,2	21,1	1,1
Labour exchange office	57,3	10,1	10,1	22,5	0
Police	84,4	6,7	5,6	3,3	0
Court	86,2	9,2	1,1	2,3	1,1
Department of National Minorities and Lithuanians Living Abroad	95,3	0	1,2	1,2	2,3
Institutions such as the Office of Equal Opportunities Ombudsperson, Institution of the Ombusman for Children Rights, the Seimas Ombudsman 's Office	88,4	5,8	0	3,5	2,3
Education instituton (school)	27,5	13,2	9,9	49,5	0
NGO	77,9	1,2	3,5	11,6	5,8
Leader or representatives of Roma community	61,4	9,1	12,5	13,6	3,4
Church	41,6	10,1	6,7	40,4	1,1
Journalists	87,5	6,8	4,5	1,1	0

**Table 4.2.** How old were you, when you gave birth for your first child? (N=99, women, %)

	N	%
Under 16 m.	16	16,2
17 – 18 years old	37	37,4
19 – 20 years old	15	15,1
21 – 22 years old	13	13,2
23 – 24 years old	6	6,0
25 years old and >	14	14,0
Total	99	100,0

## 5 Poverty/ Economic situation

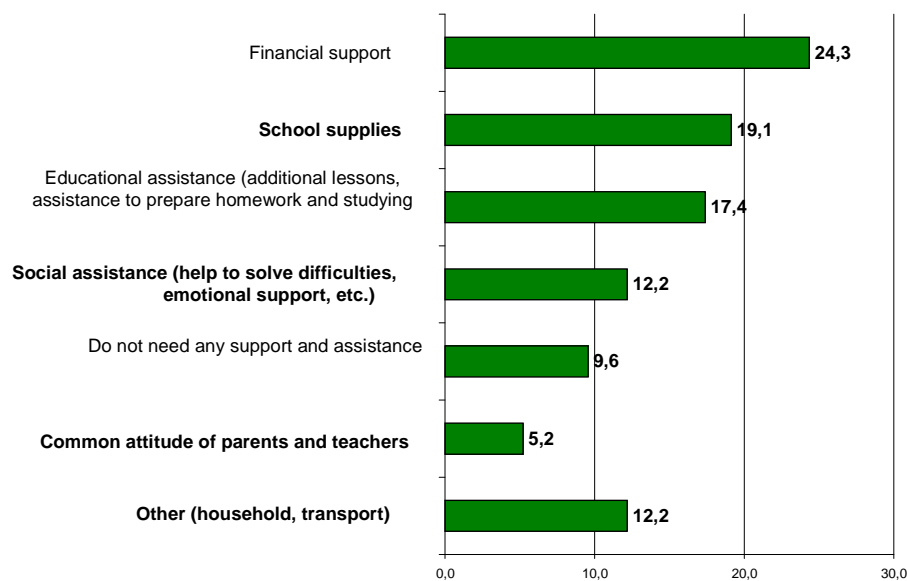
**Table 5.1.** Do you have living abroad experience? (N=231, %)

	N	%
Yes	68	29,4
No	154	66,7
Did not indicate	9	3,9
Total	231	100,0

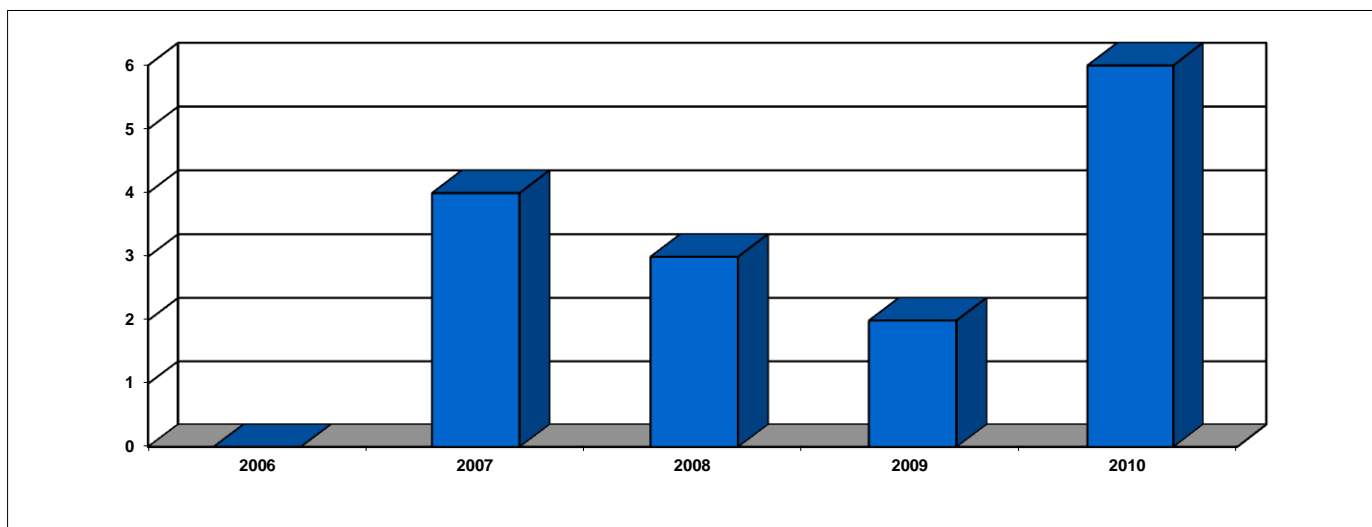
**Table 5.2.** How long did you live abroad? (N=65, %)

	N	%
Less than 1 year	15	23,1
1-4 years	19	29,2
5-10 years	19	29,2
11 years and more	12	18,5
Total	65	100,0

**Table 5.3** What kind of support would your children need studying at school (starting to study)? (N=107, %)



### 3. Table of complaints



Source *The Office of Equal Opportunities Ombudsperson (2011)*

#### **Ethnic/ racial discrimination when looking for work<sup>144</sup>**

**Name of the court:** Vilniaus miesto 2-sis apylinkės teismas [2nd District Court of Vilnius City];

**Date of decision:** 30 June 2008;

**Name of the parties:** S. Marcinkevič v. UAB Disona

**Reference number:** 2-1189-545/2008.

**Brief Summary:** This is a landmark case where direct discrimination was established for the first time in the court. The case of discrimination against a Roma woman was brought to the court at the end of 2007. A Vilnius based human rights advocacy NGO assisted the Roma woman, by exercising situation testing method, to prove that discrimination did actually happen at the recruitment of the woman at a café. A Lithuanian woman of a similar age as the complainant was sent to the cafe a few hours later after the Roma woman had been told that the place is no longer vacant. The Lithuanian woman was immediately accepted. The results from the situation testing were approved by a bailiff and later used in court to successfully challenge discriminatory behaviour.

The NGO took part in the proceedings as a third party in support of the victim, however, an attorney was nevertheless required, who directly represented the victim in legal proceedings. The Equal Opportunities Ombudsperson Institution took part in the proceedings as an expert, providing its finding on the case.

Eventually the court ruled in favour of the applicant suffering direct discrimination, and in accordance with the Labour Code awarded her with a compensation of 2,864.98 Litas (approximately 830 Euros).

So far this remains the only case of compensation for a victim of discrimination and of a financial penalty for the perpetrator.

---

<sup>144</sup> European Network of Legal Experts in the Non-discrimination field (2008).



#### 4. Table of sources (reports and studies on Roma)

	<b>Title, author, source</b>	Institute for Labour and Social Research (2001) <i>Romų, gyvenančių Vilniaus miesto taboruose, sociologinis tyrimas. Sociological research about Roma living in Vilnius settlement.</i>
	<b>Source and type</b>	Social research
<b>Thematic area</b>	<i>Education</i>	X
	<i>Housing</i>	X
	<i>Employment</i>	X
	<i>Health</i>	
	<i>Poverty</i>	X
	<i>Migration</i>	
	<i>Active citizenship</i>	
	<b>Sample</b>	151 Roma respondents in Vilnius settlement interviewed
	<b>Location</b>	Settlement in city of Vilnius
	<b>Target population</b>	Roma of Vilnius city
	<b>Key findings</b>	<p>The survey showed that 18% of men and 35% of women are illiterate. Those who attended school have a primary education (5 grades for men and 4 grades for women).</p> <p>Children from 27% of Roma families did not attend school. Many families could not explain the reasons for non-attendance; only 15% of respondents mentioned lack of money and clothes, incomplete documents, or unwillingness to study.</p> <p>The research indicated poor housing conditions. Illegal houses are registered under one address. Roma respondents talked about poor sanitary conditions. Seventy-six % of respondents would like to move out of the settlement to better housing.</p> <p>The research showed the high unemployment of the Roma. Around 60% of respondents reported irregular employment, 53% received support from municipal social services, and only 2% mentioned a constant source of income.</p> <p>The reasons for unemployment are the discriminatory attitudes of employers to Roma, low level of Roma education, and traditional way of living.</p>
	<b>Methodology</b>	Narrative interviews of adults in all households of the settlement
	<b>Representativeness, transferability of findings</b>	Roma for Vilnius city

	<b>Title, author, source</b>	Kučinskaitė, E.K. (2005). Lithuanian Roma and Statistics
	<b>Source and type</b>	Non-governmental report
<b>Thematic area</b>	<i>Education</i>	X
	<i>Housing</i>	X
	<i>Employment</i>	X
	<i>Health</i>	X
	<i>Poverty</i>	X
	<i>Migration</i>	
	<i>Active citizenship</i>	
	<b>Sample</b>	<p>Research referred to statistics of the 2001 Population Census.</p> <p>Roma made up only 0.07 percent (2571 persons) of the population of Lithuania</p>
	<b>Location</b>	Lithuania
	<b>Target population</b>	Lithuanian Roma
	<b>Key findings</b>	<p>Overview of official quantitative data about Roma in Lithuania.</p> <p>Research referred to statistics of the 2001 Population Census. Roma made up only 0.07 percent (2571 persons) of the population of Lithuania</p> <p>Regional demographic data suggested that Roma were dispersed throughout Lithuania and that the largest concentrations of Roma were in Vilnius, Kaunas, Šiauliai, Panevėžys, and Marijampolė counties.</p> <p>Participation of the Roma minority was very limited, though a number of Roma NGOs had been established.</p> <p>Housing problems had increased since Lithuania's independence. Self-built housing was not legalised and not privatised. The land where houses stand was not registered as private property.</p> <p>Average indicators show that Roma lived in much more crowded and worse conditions.</p> <p>Roma unemployment increased significantly during the period of transition and made up 69 per cent of the labour force of Roma ethnicity—i.e. a share 50 per cent greater than it was in the population as a whole.</p> <p>Statistical data showed the poor situation of Roma education—many with primary or low education (including some without education). Seventy-one per cent of Roma did not have secondary education. In general the Roma minority had a six times larger percentage of illiterates. A majority of Roma (59 per cent) 15–18 years old did not attend any educational institution.</p> <p>The health situation could hardly be researched because there is no available data by ethnicities.</p> <p>Health statistics indicated that Romani women mainly had their first child at a younger age than the population as a whole.</p>
	<b>Methodology</b>	Quantitative research.

		Quantitative data collected from state and non-governmental institutions.
	<b>Representativeness, transferability of findings</b>	Generally for Roma of the country

	<b>Title, author, source</b>	Žmogaus teisių stebėjimo institutas (en. Human Rights Monitoring Institute) (2006) <i>Vilniaus Romų būsto problema: teisinė analizė</i> <i>Vilnius (en. Roma Housing Problems: Legal Analysis)</i>
	<b>Source and type</b>	Policy research
<b>Thematic area</b>	<i>Education</i>	
	<i>Housing</i>	X
	<i>Employment</i>	
	<i>Health</i>	
	<i>Poverty</i>	
	<i>Migration</i>	
	<i>Active citizenship</i>	
	<b>Sample</b>	Vilnius Kirtimai Roma settlement, inhabited by 900 Roma
	<b>Location</b>	Vilnius Kirtimai Roma settlement, inhabited by 900 Roma
	<b>Target population</b>	Roma from Kirtimai settlement
	<b>Key findings</b>	<p>Research identified the passive position of Vilnius Municipality and state institutions to solving the issues of Roma rights to land and buildings.</p> <p>The policies of Vilnius Municipality aimed at evicting Roma from the Kirtimai settlement contradicted the legal acts of Lithuania and strengthened the exclusion of the Roma.</p> <p>Legal procedures and a flexible, socially oriented support system for the recognition of Roma housing at the Kirtimai settlement are needed to effectively solve the social problems of Roma discrimination.</p>
	<b>Methodology</b>	Qualitative data collection from legal counselling
	<b>Representativeness, transferability of findings</b>	For Roma of Kirtimai settlement

	<b>Title, author, source</b>	Socialinių tyrimų instituto Etninių tyrimų centras (2007). <i>Romų ir darbdavių nuostatos dėl romų integracijos į darbo rinką Attitudes of Roma and employers about Roma integration in the labour market</i>
	<b>Source and type</b>	Sociological research under the EQUAL initiative, implemented by the Lithuanian Children's Foundation, an NGO
<b>Thematic area</b>	<i>Education</i>	
	<i>Housing</i>	
	<i>Employment</i>	X
	<i>Health</i>	
	<i>Poverty</i>	
	<i>Migration</i>	
	<i>Active citizenship</i>	
	<b>Sample</b>	Interviews of 119 Roma respondents Interviews of 7 experts Interviews of 100 employers
	<b>Location</b>	Roma respondents from Vilnius, Kaunas, Šiauliai, Panevėžys, Šalčininkai and Klaipėda Employers from Vilnius, Kaunas and Panevėžys
	<b>Target population</b>	Roma and employers
	<b>Key findings</b>	<p>The research showed that many Roma were employed in a broad range of professions but had short-term employment histories. The interviews suggested that many Roma preferred to start an individual or family business and work close to their living areas.</p> <p>Many Roma would like to have prestigious and prospective jobs such as car mechanics, florists, music programme managers, and social workers. The social ties of individual Roma are better developed if they are born into prosperous families and can rely on their family connections. This is not enough for integration in the society and labour market of the majority, however.</p> <p>The negative attitudes of employers to Roma show that they are unwilling to employ Roma despite shortages of labour or because of their limited professional skills. 47% of the employers who were interviewed stated that they would likely not hire Roma. 44% of employers stated that Roma would have problems adapting in the working environment. Employers also are unwilling to invest into unskilled workers.</p>
	<b>Methodology</b>	Quantitative and qualitative research
	<b>Representativeness, transferability of findings</b>	Generally for Roma of the country

	<b>Title, author, source</b>	Socialinių tyrimų instituto Etninių tyrimų centras (2008). <i>Romų padėties tyrimas: romai švietimo ir darbo rinkos sankirtoje. Roma situation: Roma at the Cross-Road of Education and Labour Market</i>
	<b>Source and type</b>	Sociological research under a commission of the Department of National Minorities and Lithuanians Living Abroad
<b>Thematic area</b>	<i>Education</i>	X
	<i>Housing</i>	
	<i>Employment</i>	X
	<i>Health</i>	
	<i>Poverty</i>	
	<i>Migration</i>	
	<i>Active citizenship</i>	
	<b>Sample</b>	Analysis of secondary sources and statistics of Roma school attendance Survey with a sample of 231 Roma Interviews of 50 experts
	<b>Location</b>	Various geographical sites in Lithuania
	<b>Target population</b>	Lithuanian Roma
	<b>Key findings</b>	<p>The research indicated the existence of poverty migration within the country, when Roma move to cheaper housing. This process indicates a deepening social marginalisation of Roma. They are set away from centres and opportunities for social development both geographically and socially.</p> <p>The majority of Roma surveyed (57%) indicated that they were unemployed. 41% of Roma surveyed were employed or involved in activities that generate income. These are mainly informal individual activities (collection of scrap metal, fortune-telling, or small-scale trade).</p> <p>Only 9% of employed Roma had formal contracts. Roma maintain weak relations with schools. 28% of Roma with school children indicated that over the previous 12 months they or had any contacts at the school. 52% of Roma surveyed had had no contact with a social worker in the previous year.</p> <p>The majority of Roma acquire only primary education. Basic and secondary education remains a challenge. A distinct portion of young Roma surveyed (32% of those below 18 years old) started school at the age of 10 or later. 56% of Roma surveyed did not acquire higher education than their parents; in these terms, the community's social development is making no progress. Experts stated that the main difficulties of Roma learning are related to the lack of social skills, linguistic barriers, and poor school attendance. The majority of Roma children (69%) did not attend any pre-school establishment or group. Schools do not have any specific plans or positions regarding the solution of problems related to poor attendance.</p> <p>The Roma surveyed mentioned that it was difficult for them to support their children at school. There are financial problems (clothing, etc.) and lack of educational assistance, including extra lessons, homework, and social support in coping with various difficulties (conflicts among children at school, documentation, etc).</p>
	<b>Methodology</b>	Quantitative (questionnaire) and qualitative research
	<b>Representativeness,</b>	

	<b>transferability of findings</b>	
	<b>Title, author, source</b>	Centre of Ethnic studies, Institute for Social Research (2009) <i>Housing conditions of Roma and Travellers</i>
	<b>Source and type</b>	Thematic study
<b>Thematic area</b>	<i>Education</i>	
	<i>Housing</i>	X
	<i>Employment</i>	
	<i>Health</i>	
	<i>Poverty</i>	
	<i>Migration</i>	
	<i>Active citizenship</i>	
	<b>Sample</b>	Desk research and field research of legal and policy framework, available quantitative and qualitative data and information on the housing conditions of Roma in Lithuania
	<b>Location</b>	Lithuania
	<b>Target population</b>	Roma in Lithuania
	<b>Key findings</b>	The research identified a great shortage of rental housing, especially for low-income persons and families. In 2008, social housing accounted for only 2.7% of the total housing stock. The possibilities to acquire social housing are very limited for the Lithuanian population in general and do not meet demand. Legal and policy documents that cover antidiscrimination and equal opportunities do not target housing (except social integration programmes for refugees) or directly apply to the issues of Roma. The research identified two main problems with Roma housing in Lithuania: 1) the quality of the existent housing and 2) the opportunities to legitimate present housing (illegal structures and status of state land) or change the place of residence. Social housing is not necessarily a suitable alternative for the Roma because it increases living costs and is difficult to afford. No governmental reports on Roma issues, including housing, are available in Lithuania. Only international bodies, NGOs, and academic institutions report about Roma issues and problems in Lithuania. The research concludes that a multifaceted plan to improve the Roma situation is absent in Lithuania. The future prospects for reforms at the Roma settlement in Kirtimai are very obscure.
	<b>Methodology</b>	Quantitative analysis of the content of the media reports
	<b>Representativeness, transferability of findings</b>	Generally for Roma of the country

## 5. Roma networks

Type of Associations, Organisations, NGOs	Name of Organisation	Email/Website	Roma involvement	Main area of expertise
NGO	Lithuanian Gypsy association Gypsy Fire	matluiza@gmail.com http://www.roma.lt/v2/index.php?aEoeAEOEigonA-lauAasaEoe	Based in Vilnius, the oldest and most active Roma organisation in Lithuania. Gypsy Fire is one of the founders of Roma Community Centre (in Kirtimai, Vilnius).	Education Employment Housing Youth Culture Discrimination
NGO	Šalčininkai regional branch of Lithuanian Gypsy association Gypsy Fire	Phone: 0037038035649 Village of Jašiūnai, Šalčininkai District	Regional branch of Lithuanian Gypsy association Gypsy Fire.	Education Employment Housing, Youth Culture Discrimination
NGO	Vilnius Gypsy Community	Phone: 00370 677 13807 No website, Verkių street 78-5, Vilnius	The Vilnius Gypsy Community has been active in the advocacy of Vilnius Roma living in Kirtimai settlement after the destruction of houses in 2004 and 2012.	Housing Discrimination
NGO	Roma Integration House	Bozena_michaj@mail.ru No website, address of registration -Švyturio g. 19-66, Vilnius	The Roma Integration House is a newly established Roma organisation led by two Roma women. The organisation plans to address issues of children education.	Education
NGO	Human Rights Monitoring Institute (HRMI)	hrmi@hrmi.lt <a href="http://www.hrmi.lt/">http://www.hrmi.lt/</a>	The Human Rights Monitoring Institute (HRMI) was founded in 2003 with the mission to promote an open democratic society through the consolidation of human rights and freedoms. The HRMI initiated several strategic litigation cases in court on behalf of Roma: in 2007 regarding a case of ethnic discrimination in employment and in 2006 regarding the destruction of Roma housing in Vilnius. The HRMI also prepares annual human rights monitoring reports and various alternative reports, including reviews of the Roma situation in Lithuania, for international organisations.	Human rights Discrimination Advocacy
NGO	Lithuanian Centre for Human Rights (LCHR)	<a href="mailto:birute@lchr.lt">birute@lchr.lt</a> <a href="http://www.lchr.lt/index.php?lang=2">http://www.lchr.lt/index.php?lang=2</a>	Since 1994, the Lithuanian Centre for Human Rights has focused on human rights education and implemented numerous projects and activities in the field. The LCHR is one of the organisations that signed the “Resolution of Roma organisations and non-governmental organisations working with Roma regarding the Roma integration strategy in Lithuania” (15 March 2012).	Human rights Education Discrimination
Public institution	Roma Community Centre	sn713@hotmail.com <a href="http://www.roma.lt/v2/index.php?kontaktai">http://www.roma.lt/v2/index.php?kontaktai</a>	The Roma Community Centre in Vilnius was founded in July 2001 as a result of implementing the State Programme of Roma Integration into Lithuanian Society for 2000–2004. The aim of the centre is to help the Roma community living in Kirtimai camp to integrate into Lithuanian society. Special attention is paid to children and teenagers. The Roma Community Centre is one of the organisations that signed the “Resolution of Roma organisations and non-governmental organisations working with Roma regarding the Roma integration strategy in Lithuania” (15 March 2012).	Children, youth Education Employment Housing Discrimination Culture

<b>NGO</b>	National Social Integration Institute	neringa@zmogui.lt http://zmogui.lt/	The National Institute for Social Integration was established in 2009 as a continuation of the “All Different—All Equal” campaign. In 2012 the institute coordinated the development of the “Resolution of Roma organisations and non-governmental organisations working with Roma regarding the Roma integration strategy in Lithuania” (15 March 2012). The National Social Integration Institute also helped to establish the Roma Integration House.	Non-formal education Youth Discrimination
<b>NGO</b>	Lithuanian Young Falcon Union	inesakarsten@gmail.com http://www.sakaliukai.lt/news.php	Since 2010, the Lithuanian Young Falcon Union has been implementing a project aimed at pre-school and primary school age Roma children living in Kirtimai, Vilnius “Help me to fit in: First steps in school”. The project is based on volunteer work and non-formal education of children. The Lithuanian Young Falcon Union is one of the organisations that signed the “Resolution of Roma organisations and non-governmental organisations working with Roma regarding the Roma integration strategy in Lithuania” (15 March 2012).	Children Education
<b>NGO</b>	Lithuanian Children’s Fund	romualda.navikaite@lvf.lt http://www.lvf.lt/	Since 1994, the Lithuanian Children’s Fund has been in close cooperation with the Kirtimai Roma community, and is one of four founders of the Roma Community Centre. The fund has implemented several projects for and with Roma children, mainly on non-formal education and children’s rights, and organised summer camps. The Lithuanian Children’s Fund is one of the organisations that signed the “Resolution of Roma organisations and non-governmental organisations working with Roma regarding the Roma integration strategy in Lithuania” (15 March 2012).	Children Education
<b>Public institution</b>	United Nations Development Programme in Lithuania	lyra.jakuleviciene@undp.org	In 2009–2012, the United Nations Development Programme in Lithuania coordinated the project “Face the Roma”, which is aimed at developing and testing a multifaceted approach for the inclusion of Roma in the labour market and motivating and supporting them in keeping their jobs. United Nations Development Programme in Lithuania is one of the organisations that signed the “Resolution of Roma organisations and non-governmental organisations working with Roma regarding the Roma integration strategy in Lithuania” (15 March 2012).	Employment
<b>Public institution</b>	SOPA (Social Support in Employment)	info@sopa.lt http://sopa.lt/	In 2009–2012, SOPA was one of the partners that implemented the project “Face the Roma”, which is aimed at developing and testing a multifaceted approach for the inclusion of Roma in the labour market as well as motivating and supporting them in keeping their jobs. SOPA is one of the organisations that signed the “Resolution of Roma organisations and non-governmental organisations working with Roma regarding the Roma integration strategy in Lithuania” (15 March 2012).	Employment
<b>Public institution</b>	Panevėžys Children’s Day-Care Centre	daskdp@gmail.com http://www.vaikudienoscentras.blogspot.com/	Panevėžys Children’s Day-Care Centre was established by a Catholic nunnery and actively works with Roma children (as well as other children from families at social risk). The head of the day-care centre has established contacts with Roma families in Panevėžys region and on several occasions has represented Roma at the regional level.	Education Youth, children